

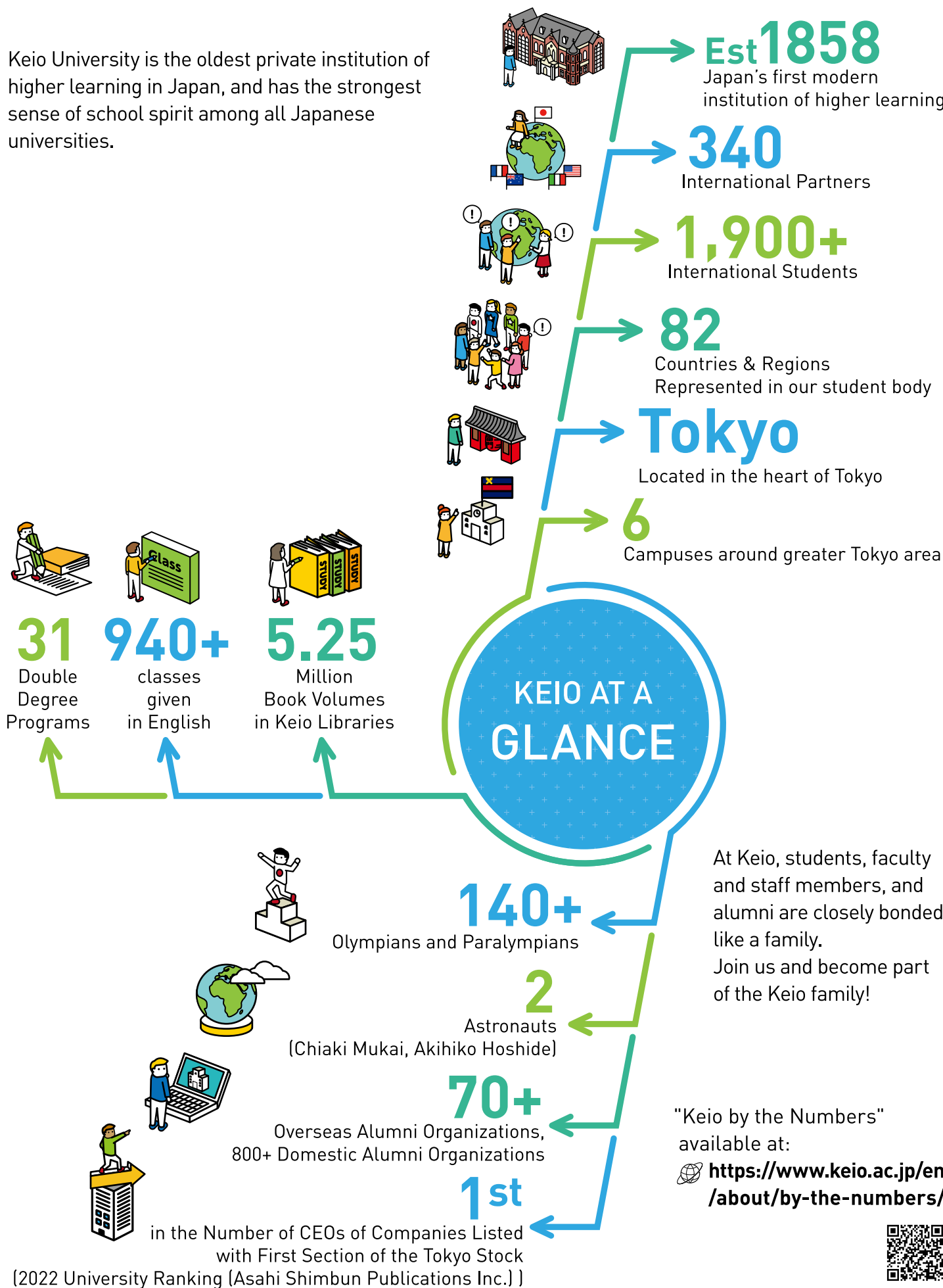
Student Exchange Program

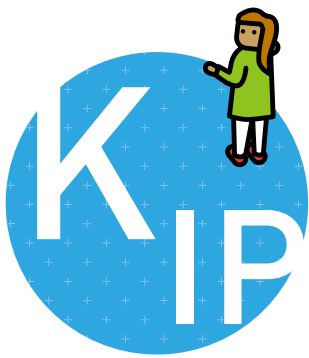


Keio University

Keio University, where **global leaders** are made

Keio University is the oldest private institution of higher learning in Japan, and has the strongest sense of school spirit among all Japanese universities.





Keio International Program

In this program, students can study about Japan and East/Southeast Asia in English and take Japanese language courses as well. As Keio regular students can also take the International Center courses, exchange students will have opportunities to study alongside Keio students.

Courses available for Exchange Students (A minimum of 7 courses per semester)

International Center Courses

-English-taught courses focusing on Japan and East/Southeast Asia



Fields

- Language and Literature
- Arts
- Culture and Cross-Cultural Understanding
- Science
- Religion and Thought
- History
- Media and Communications
- Social Issues
- Politics
- Diplomacy and International Exchange
- Business and Economy
- Law

Keio Japanese Courses

*Up to 4 courses

-Offered by the Center for Japanese Studies
-Ranging from elementary to advanced level



Sample Courses

- Grammar
- Listening & Speaking
- Reading & Writing
- Essential Japanese
- Spoken Communication
- Written Communication
- Integral Japanese
- Communication Listening & Speaking
- Japanese Culture: Honorifics
- Japanese for Communication: Daily life
- Japanese for Communication: Business
- Japanese for Communication: Media
- Japanese for Communication: Presentation & Discussion

*Contact Hour : 90 minutes session per week for the 15 weeks of a semester



Japanese Language Program

This program is offered by the Center for Japanese Studies for students who would like to focus on Japanese language learning. The curriculum is designed to assist students in attaining high levels of Japanese proficiency required for research and other academic activities in specialized disciplines.

JLP students may also take International Center Courses and other courses offered by Faculties / Graduate Schools (conducted in Japanese) as optional subjects.

*A minimum of 7 courses per semester

Study Levels

The Main Course is divided into 9 study levels. Prior to the start of each semester, all students are required to take a placement test on the basis of which they are assigned to an appropriate study level.

- Study Level 1 - 4 (Elementary)
- Study Level 5, 6 (Intermediate)
- Study Level 7, 8 (Advanced)
- Study Level 9 (Higher Advanced)

The Main Course comprises 3 types of subject groups, as described in the table below.

Comprehensive Subjects	1 credit	Comprehensive Japanese Acquiring the four skills of reading, writing, listening, and speaking through comprehensive learning activities.
Subjects with a Specific Focus	1 credit	Grammar, Grammar (Classics), Modern Text Reading, Newspaper Reading, Orthography, Composition, Aural Comprehension, Conversation, Presentation, Applied Composition, and Situational Conversation
Japanese Studies on Society and Culture	2 credit	Japanese Social Studies (History of Japanese Literature, "Noh" Play) Japanese Cultural Studies (Traditional culture, Japanese painting, Japanese animation and TV game) Deepening the knowledge of Japanese society and culture.

*Contact Hour : 90 minutes session per week for the 15 weeks of a semester

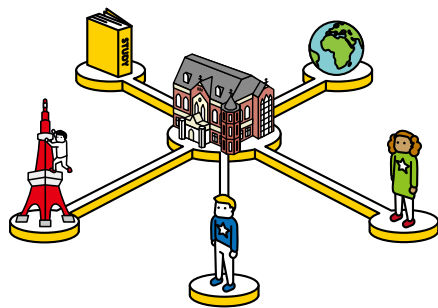
Courses offered by Faculties / Graduate Schools

-Mostly taught in Japanese

*Advanced Japanese proficiency (JLPT N2 or above) required

-English-taught courses are also available

*Limited number of courses are available for exchange students, and priority is given to regular students



Research Program

*Open only to graduate exchange students



This program is available for graduate students who wish to conduct research under the supervision of an academic advisor at Keio University. Students must be enrolled in a graduate school (or equivalent) at their home institution.

While focusing on their research, they may also take:

- Graduate-level courses open to exchange students
- Up to 4 Japanese language courses offered by the Center of Japanese Studies



FAQ

Q1 Do you have university dormitories?

We do have several off-campus housing that is subsidized by Keio. Exchange students will be given prior access to rooms in these housing arrangements during their study period.

Q2 Are there any scholarships available for exchange students?

Scholarships by JASSO (Japanese Student Services Organization) may be offered to incoming exchange students based on the revised criteria for the year.

Successful applicants will be provided with 80,000 JPY per month for up to a maximum of 11 months.

The number of scholarship recipients per year is subject to change.

Q3 What is the cost of living at Keio?

Approximately 130,000-170,000 JPY / month (meals, transportation, etc)

Q4 Can I attend for only one semester?

Students may choose to attend one semester or two semesters (one academic year). Extending your study period is not permitted in principle. Please plan and choose your study period very carefully when you apply.

Q5 How many courses can I take? And how many credits can I earn?

Most of the courses at Keio are worth 2 credits per semester, whereas the Japanese language courses are usually worth 1 credit per semester. There is no maximum credit limit.

Q6 Do you have any Japanese language requirements for the Japanese Language Program?

We accept and welcome complete beginners. However, we always recommend learning some basic Japanese before you come to Japan.

Q7 Can I take regular undergraduate courses at Keio University?

Most of the undergraduate faculty courses are conducted in Japanese. You can take those courses only if you meet the Japanese language proficiency requirements. Additional prerequisites may also apply to certain courses.

Q8 When will the course list be available?

Course lists for the new academic year, from April to March, usually become available in late March.

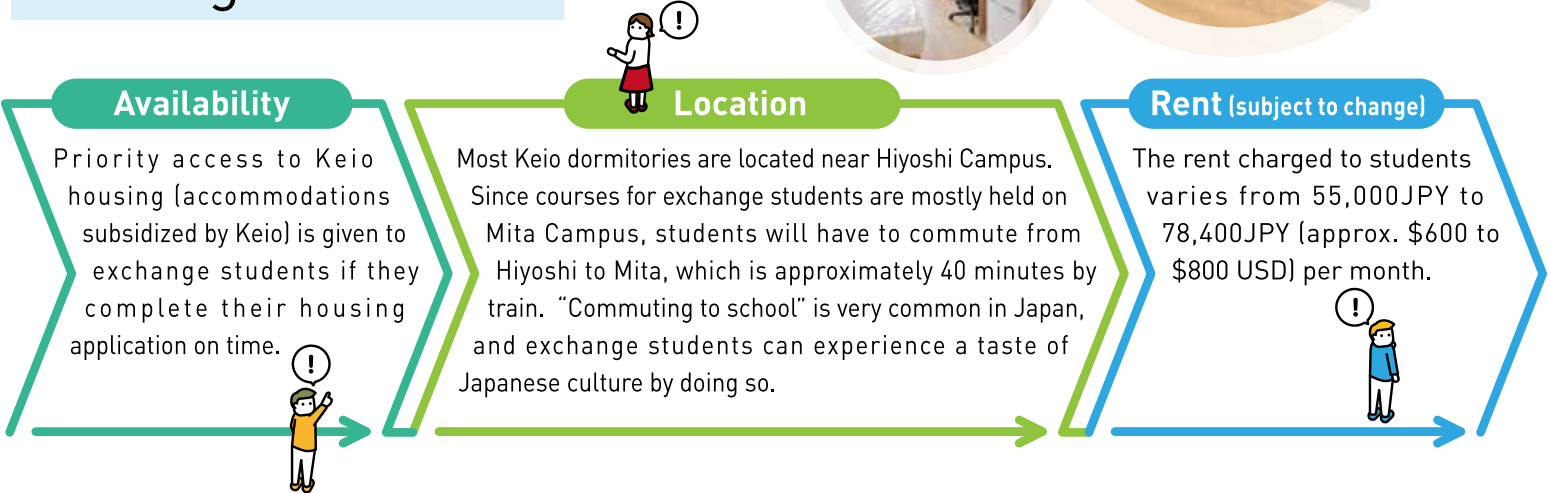
Q9 Do you have a buddy program?

Yes, we have a buddy program called the "Keio Tomodachi Program." Buddies are students at Keio University who volunteer to introduce you to life in Japan.

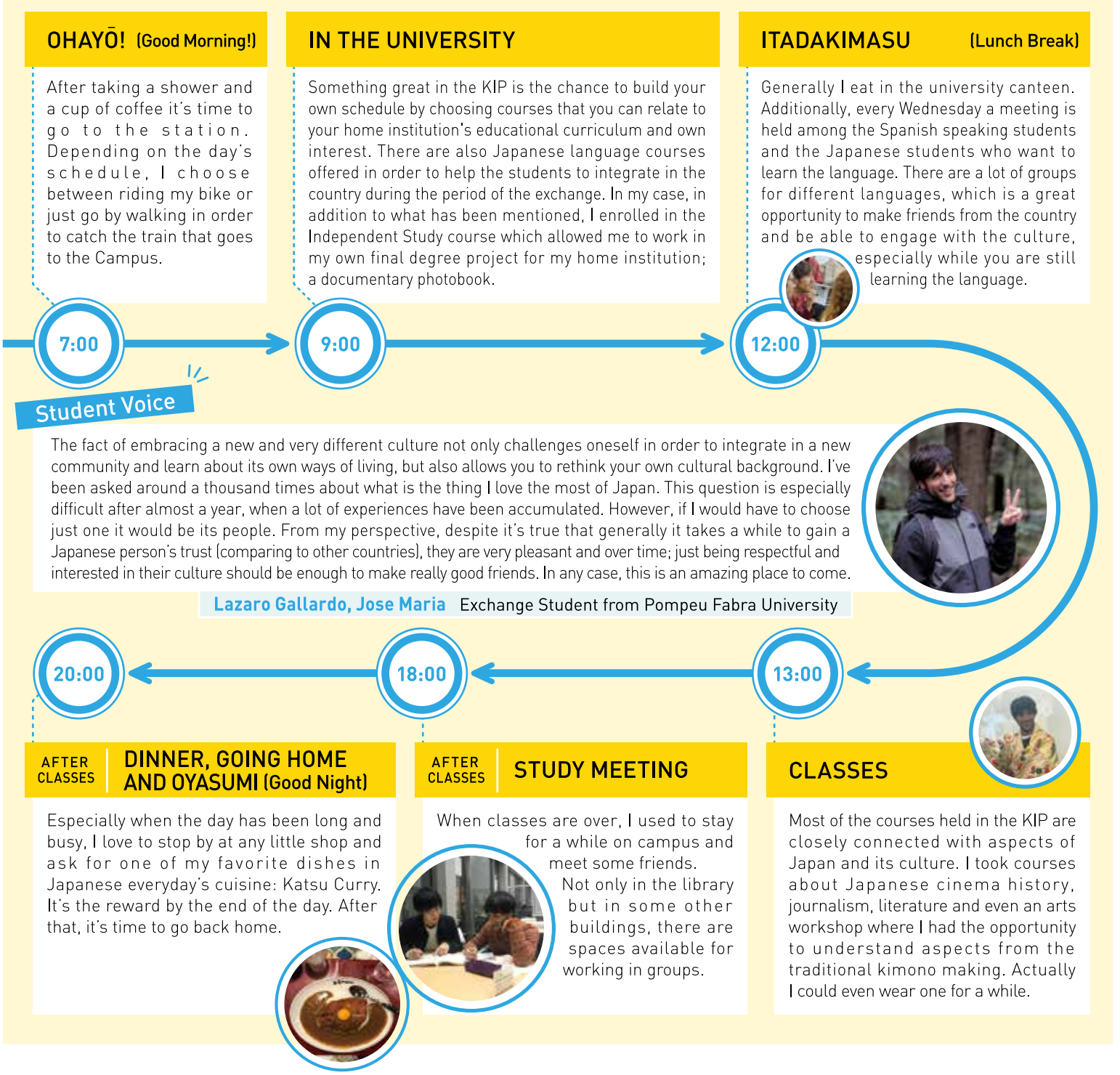
Q10 Is late arrival or early departure accepted?

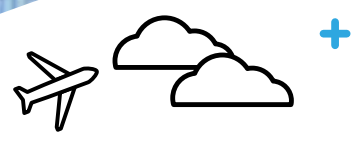
No, we do not make any special arrangements for late arrival or early departure. Please plan and choose your study period very carefully when you apply.

Housing Information



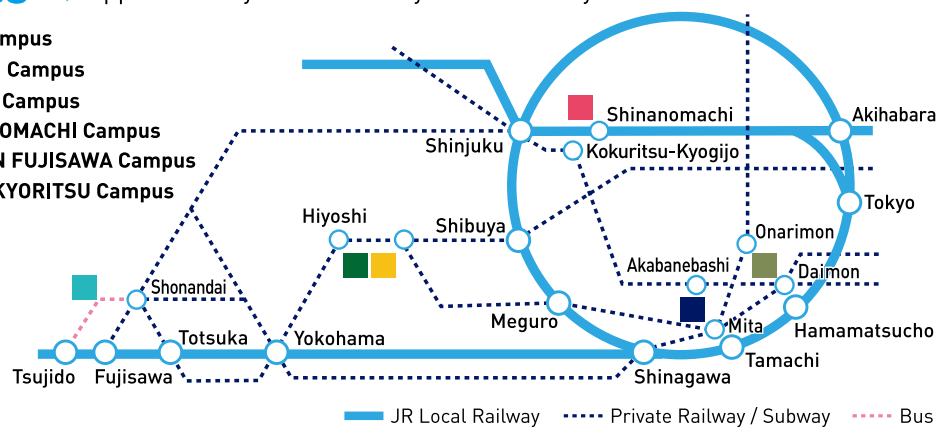
A day at Keio





Access ▶ Approximately 40 minutes by train from Hiyoishi to Mita.

- MITA Campus
- HIYOSHI Campus
- YAGAMI Campus
- SHINANOMACHI Campus
- SHONAN FUJISAWA Campus
- SHIBA-KYORITSU Campus



WEBSITE FOR STUDENT EXCHANGE PROGRAM

Information in this brochure is subject to change without notice. Please check the Student Exchange Program website for updated and detailed information.

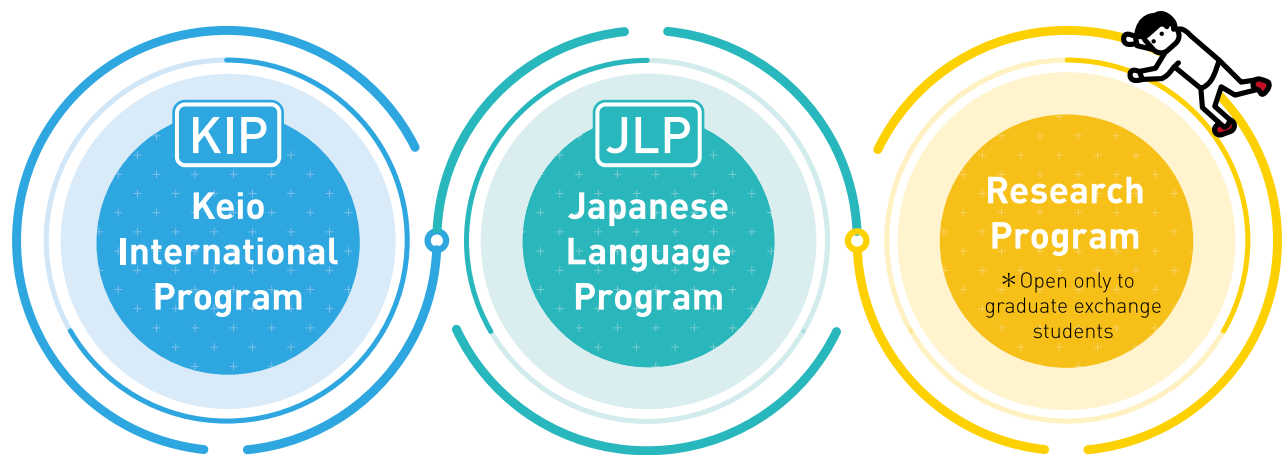
Keio University International Center
 2-15-45 Mita, Minato-ku, Tokyo 108-8345 JAPAN
e-mail: ic-student@adst.keio.ac.jp

 <https://www.ic.keio.ac.jp/en/study/exchange/>



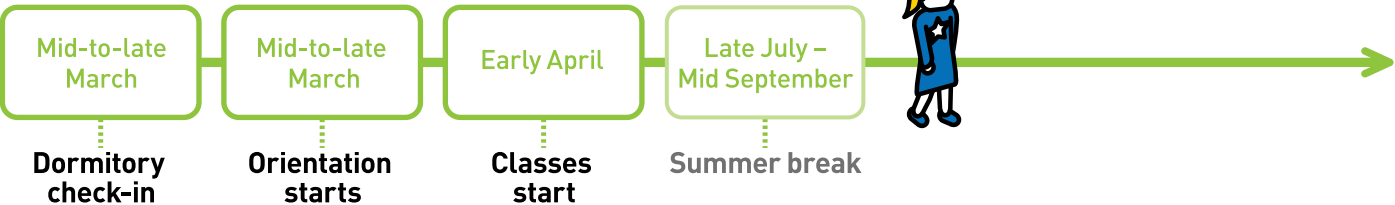
Programs for Exchange Students

Keio University welcomes international exchange students from our partner universities. We offer three programs for undergraduate and graduate exchange students, who must be current undergraduate or graduate students of our partner university at the time of coming to Keio. These students may choose to attend one of the following programs for one semester or one year as exchange students at Keio University.

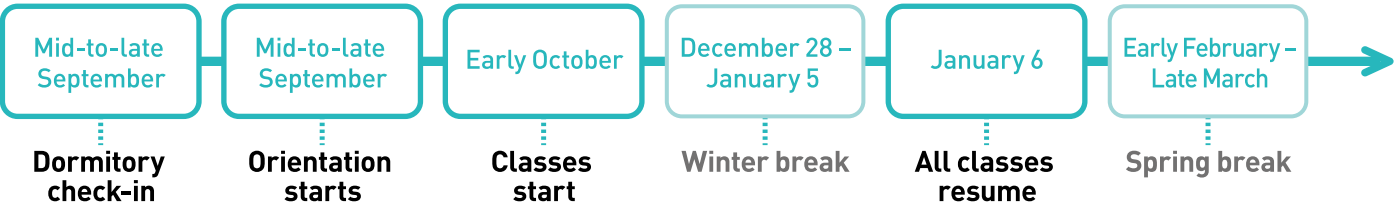


ACADEMIC CALENDAR *Subject to change

Spring Semester



Fall Semester



APPLICATION PROCEDURES

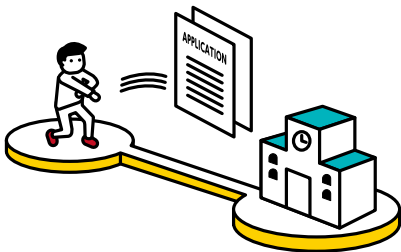
Online application available at:

 <https://www.ic.keio.ac.jp/en/study/exchange/apply.html>

Deadline for Application

Spring Semester > Early October

Fall Semester > Late March

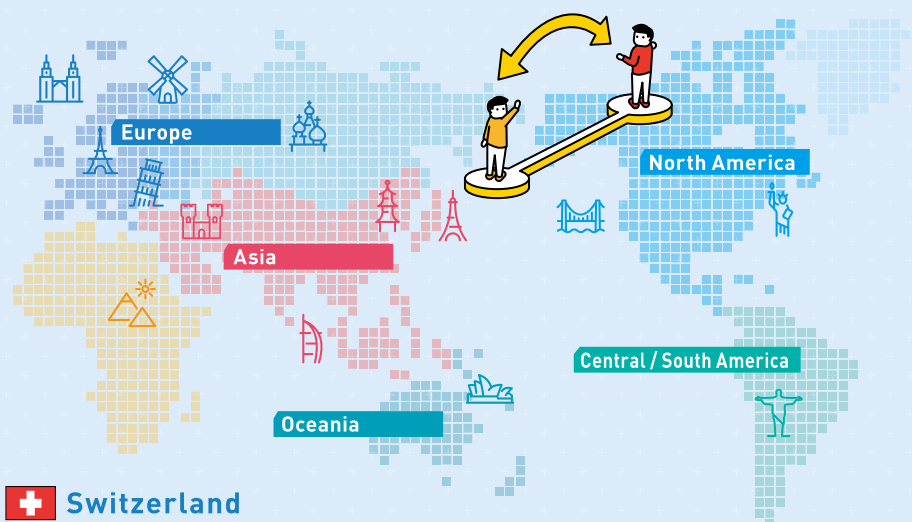


Keio welcomes international students from diverse backgrounds, expanding its world-wide network

Keio University's Partner Institutions (As of August 2022)

Europe / Middle East

- Austria**
 - WU (Vienna University of Economics and Business)
- Belgium**
 - Universiteit Antwerpen
- Denmark**
 - Aarhus University
- France**
 - École normale supérieure (ENS)
 - EDHEC Business School
 - ESSEC Business School
 - HEC Paris
 - INALCO
 - Jean Moulin - Lyon 3 University
 - Sciences Po
 - Toulouse 1 Capitole University
 - Université de Strasbourg
 - Université Côte d'Azur
 - * Former name : Université Nice Sophia Antipolis
 - Université Paris 1 Panthéon-Sorbonne
 - Université de Paris
 - * Former name : Université Paris Diderot
 - Université Sorbonne Nouvelle
 - * Former name : Université Sorbonne Nouvelle - Paris 3
- Germany**
 - Freie Universität Berlin
 - Heinrich Heine University Düsseldorf
 - Martin Luther University Halle-Wittenberg
 - RWTH Aachen University
 - Saarland University
 - Technische Universität Darmstadt (TU Darmstadt)
 - Technische Universität München (TUM)
 - TU Dresden
 - University of Bonn
 - University of Cologne
 - University of Siegen
 - WHU - Otto Beisheim School of Management
- Greece**
 - National and Kapodistrian University of Athens
- Hungary**
 - University of Pécs
- Ireland**
 - University College Dublin
- Italy**
 - Ca' Foscari University of Venice
 - "L'Orientale" University of Naples
 - Sapienza Università di Roma
 - Università Bocconi
 - University of Pavia
- Netherlands**
 - Erasmus University Rotterdam
 - Leiden University
 - University of Amsterdam
 - VU University Amsterdam
- Norway**
 - University of Bergen
 - University of Oslo
- Poland**
 - University of Warsaw
- Russia**
 - Far Eastern Federal University
 - Lomonosov Moscow State University
 - Saint Petersburg State University
- Spain**
 - ESADE Business School
 - Pompeu Fabra University (UPF)
 - Universidad de Salamanca (USAL)
 - Universitat Autònoma de Barcelona (UAB)
 - University of Navarra
- Sweden**
 - KTH
 - Lund University
 - University of Gothenburg
 - Uppsala University



Switzerland

- University of Bern
- University of Geneva (UNIGE)
- University of Lausanne (UNIL)
- University of St.Gallen
- University of Zurich

Turkey

- Boğaziçi University

United Kingdom

- Cardiff University
- King's College London
- Royal Holloway, University of London
- SOAS University of London
- The University of Edinburgh
- The University of Manchester
- The University of Sheffield
- The University of Warwick
- University of Birmingham
- University of Glasgow
- University of Southampton
- University of St Andrews
- University of York (UK)

Thailand

- Chulalongkorn University

Viet Nam

- Foreign Trade University

North America

Canada

- Concordia University
- McGill University
- Queen's University
- The University of British Columbia
- Université de Montréal
- University of Calgary
- University of Toronto
- York University (Canada)

United States

- Allegheny College
- American University
- Boston University
- Brown University
- Bryn Mawr College
- Carnegie Mellon University
- Dartmouth College
- Georgetown University
- Illinois Wesleyan University
- Manhattanville College
- Rice University
- The College of William & Mary
- The University of North Carolina at Chapel Hill
- University of California Education Abroad Program
- University of Hawai'i at Mānoa
- University of Illinois at Urbana-Champaign
- University of Maryland, College Park
- University of Notre Dame
- University of Pennsylvania
- University of Washington
- University of Wisconsin-Madison
- Western Michigan University

Central / South America

Argentina

- Universidad Torcuato Di Tella

Mexico

- Tecnológico de Monterrey

Oceania

Australia

- The Australian National University
- The University of Melbourne
- The University of New South Wales
- The University of Queensland
- The University of Sydney

New Zealand

- The University of Auckland
- University of Otago

Asia

Brunei Darussalam

- Universiti Brunei Darussalam

China

- Beijing Foreign Studies University
- Beijing Normal University
- City University of Hong Kong
- Fudan University
- Jilin University
- Nanjing University
- Nankai University
- Peking University
- Renmin University of China
- Shanghai Jiao Tong University
- The Chinese University of Hong Kong
- The University of Hong Kong
- Tsinghua University
- University of Macau
- Xi'an Jiaotong University
- Zhejiang University

Indonesia

- Universitas Indonesia

Korea

- Ewha Womans University
- Korea University
- Seoul National University
- Yonsei University

Philippines

- University of the Philippines

Singapore

- National University of Singapore
- Singapore Management University

Taiwan

- National Chengchi University
- National Cheng Kung University
- National Taiwan University