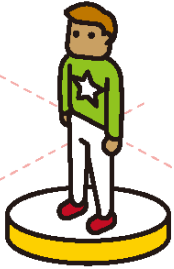
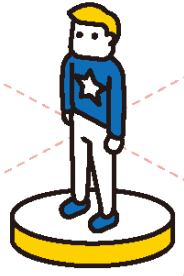


Keio University

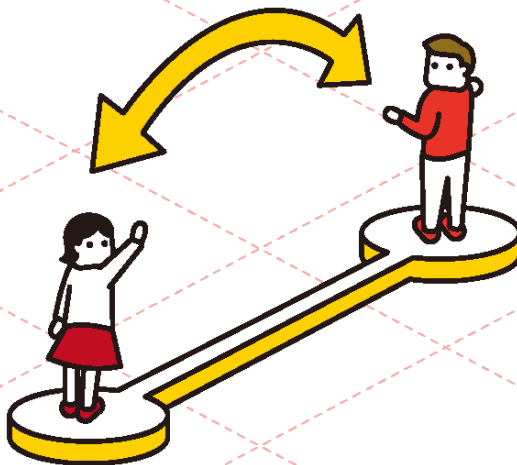
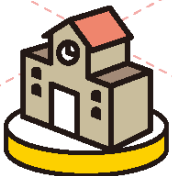
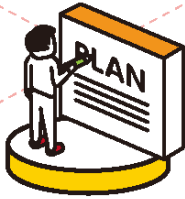
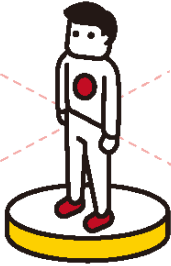


Application Guidelines for Keio University

Student Exchange Program (Outbound)



2020 Academic Year



Contents

I. Keio University Student Exchange Program (Outbound)	1
II. 2020 Academic Year Student Exchange Program Schedule	2
III. 2020 Academic Year Application and Selection Schedule	4
1. Schedule for applications and selection	4
2. How to apply	4
3. Deadline for Applications	4
4. Announcement of Results	4
5. List of Partner Universities by Application Round	5
6. Inquiries	7
IV. Qualifications, etc.	8
V. Application	14
1. How to Apply	14
2. Notes for Applying	15
3. Students who wish to apply in English	15
4. Application Documents	16
For Undergraduate Students.....	16
Application for Graduate Students and Fourth-Year Undergraduate Students Planning to Continue on to Graduate School.....	19
VI. Selection	22
1. Screening	22
2. Things valued highly in the selection process	22
VII. Selecting Your University of Choice	22
1. Selecting Your University of Choice	22
2. Information on Partner Universities	23
3. Study Abroad Report	23
IX. Past Application Statistics	28
XFAQs	32
Preparations for Applying	32
Application Documents	32
Job Hunting	35
Transfer of Credits, Advancing to the Next Year, Graduation	35

I. Keio University Student Exchange Program (Outbound)

The Keio University Student Exchange Program (Outbound) is a study abroad program based on university-wide exchange agreements between Keio University and overseas institutions. For this program, Keio University and its partner universities aim to instill in their students an international understanding and a broad perspective by offering the opportunity to experience university life in a foreign country for one academic year. The features of the program are as follows:

- Students can study abroad at Keio’s world-class partner universities.
 - The duration of the exchange program is one academic year. It is not possible to go for only one semester.
 - Students can study abroad without taking a temporary leave of absence.
 - Credits attained during the study abroad period may be transferrable to be used towards graduation or completion of courses.*
 - Upon application, up to one year of the study abroad period may be counted towards the period of enrollment at Keio University.*
 - It is compulsory for participants to join the Overseas Travel Insurance and the Crisis Management Support Service specified by Keio University.
 - While studying abroad, regular Keio University academic fees apply. The student is exempt from academic fees of the host university.
 - Students can apply for scholarships aimed specifically at Keio University exchange students (outbound).
 - There is an internal selection process.
- * This is handled differently depending on the faculty or graduate school. For details, please consult the staff member in charge of academic affairs for your faculty/graduate school.

Those who wish to apply, please carefully read these application guidelines, complete the necessary documents, and submit them within the application period. We look forward to receiving applications from students with a strong motivation to study at Keio’s partner schools and a clear sense of purpose.

II. 2020 Academic Year Student Exchange Program Schedule

The application periods differ among partner universities (refer to [Chapter III. List of Partner Universities by Application Round](#)).

For the duration of the exchange program, please check the “Period of Study” row for each partner institution in Application Guidelines for Each Partner Institution on the website below:

http://www.ic.keio.ac.jp/keio_student/exchange/ex_partners.html.

Also, additional application rounds may be held depending on the program application status. In the case that additional application rounds are to be held, notifications will be issued on the website of the International Center.

	Round 1 Application	Round 2 Application	Round 3 Application
2019 Preparing for Application	<ul style="list-style-type: none"> Improving foreign language proficiency and taking language proficiency tests. (Ensure that you take the tests as soon as possible in order to be able to submit the certificates when you make your application.) Gathering information about the partner institutions where you wish to study abroad. Confirming the procedures, conditions, etc., for the study abroad with the staff member in charge of academic affairs for your faculty/graduate school (e.g., handling of year-long courses, accreditation and transfer credits, conditions for advancing to the next year, graduation). Attending the Keio Study Abroad Fair (June, October), orientations for studying abroad, etc. 		
Early October	Online Application		
Early November	Announcement of first screening results		
Mid November	Second screening (interview)		
Late November	Announcement of second screening results		
Early December ~ Mid December	Student Exchange Program Candidate Orientation	Online Application	
December 2019 ~ August 2020	Applying to the host university, improving language proficiency, preparing for departure (e.g. vaccinations)		
2020 Late January		Announcement of first screening results	
Early February ~ Mid February		Second screening (interview)/Announcement of second screening results	
Late February		Student Exchange Program Candidate Orientation	
March ~ August		Applying to the host university, improving language proficiency, preparing for departure (e.g. vaccinations)	

	Round 1 Application	Round 2 Application	Round 3 Application
April ~ July	Acceptance by the host university, internal procedures (e.g. application for study abroad), preparing for departure (e.g. securing accommodation, visa applications, and joining insurance plans.)		
Late May~Early June			Online Application
Mid June	Keio Study Abroad Fair (assisting with preparing and running the fair and information gathering for oneself)		
Late June	Pre-departure orientation		Announcement of first screening results
Early July	Pre-departure preparation		Second screening (interview)
Mid July			Announcement of second screening results
Late August			Student Exchange Program Candidate Orientation
July ~ October	Depart for host university		
August ~ October			Applying to the host university, improving language proficiency, preparing for departure (e.g. vaccinations)
November ~ December			Acceptance by the host university, internal procedures (e.g. application for study abroad), preparing for departure (securing accommodation, visa applications, and joining insurance plans)
Early December			Pre-departure Orientation Pre-departure preparation
2020 February			Depart for host university
During Study Abroad	Submit 1) Notice of Arrival and 2) Study Abroad Report I		
April ~ August	Return to Japan		
November ~ December			Return to Japan
After returning to Japan	<To the International Exchange Services Group, Office of Student Services (Mita)> Submit 1) Notice of Return from Overseas and 2) Study Abroad Report II, and assist with running student exchange programs such as study abroad fairs <To the staff member in charge of academic affairs for your faculty/graduate school> Submit Notice of Returning to Study, Application for the Transfer of Credits, and online course registration request		

III. 2020 Academic Year Application and Selection Schedule

1. Schedule for applications and selection

		Round 1 Application	Round 2 Application	Round 3 Application
Application period	Online application website Open	Monday, September 9, 2019	Wednesday, November 20, 2019	Friday May 1, 2020
	Online application website Close	4:45 p.m. Tuesday, October 8, 2019	4:45 p.m. Wednesday, December 18, 2019	4:45 p.m. Thursday, June 4, 2020
Announcement of first screening results		Friday, November 8, 2019	Thursday, January 30, 2020	Friday, June 26, 2020
Second screening (interview)		Saturday, November 16, 2019	Thursday, February 6, 2020	Saturday, July 4, 2020
Announcement of second screening results		Thursday, November 21, 2019	Thursday, February 13, 2020	Thursday, July 9, 2020
Student Exchange Program Candidate Orientation		Saturday, December 7, 2019	Friday, February 21, 2020	Late August, 2020
Pre-departure Orientation		Late June, 2020	Late June, 2020	Early December, 2020

- * If there are any changes to the above schedule, or the schedule is fixed, it will be announced on [the International Center webpage](#).
- * In principle, changing the date and/or time of the second screening interview is not permitted, so please clear your schedule for that day. The interview schedule will be announced after the announcement of the first screening results.
- * **Participation in the orientations is compulsory.** The orientation is only for Keio students and participation is compulsory. Being absent, late, or leaving early will not be permitted unless you have a regular class. If you are absent without notifying us in advance, you may lose your eligibility as an outbound exchange student.

2. How to apply

Application documents must be submitted via our online application website. Further information will be announced on our Keio University International Center website.

http://www.ic.keio.ac.jp/keio_student/exchange/en.html

3. Deadline for Applications

<Online Registration>

- Round 1 Application: Tuesday, October 8, 2019 at 4:45 p.m.
- Round 2 Application: Wednesday, December 18, 2019 at 4:45 p.m.
- Round 3 Application: Thursday June 4, 2020 at 4:45 p.m.

4. Announcement of Results

Applicants will be notified of internal selection results by e-mail.

5. List of Partner Universities by Application Round

<Round 1 Application>

Application Deadline: October 8, 2019 (Tuesday)

Country/Region	Partner University
East Asia	3 Campus East Asia
Indonesia	Universitas Indonesia
China	City University of Hong Kong, The Chinese University of Hong Kong, The University of Hong Kong, University of Macau
Philippines	University of the Philippines
Singapore	National University of Singapore, Singapore Management University
Thailand	Chulalongkorn University
Viet Nam	Foreign Trade University
Canada	Concordia University, McGill University, Queen's University, The University of British Columbia, University of Calgary, University of Toronto, York University(Canada)
United States of America	Allegheny College, American University, Boston University, Brown University, Bryn Mawr College, Carnegie Mellon University, Dartmouth College, Georgetown University, Illinois Wesleyan University, Manhattanville College, Rice University, The College of William & Mary, The University of North Carolina at Chapel Hill, University of California Education Abroad Program, University of Hawai'i at Mānoa, University of Illinois at Urbana-Champaign, University of Maryland, College Park, University of Notre Dame, University of Pennsylvania, University of Washington, The University of Wisconsin-Madison, Western Michigan University
Denmark	Aarhus University
Hungary	University of Pécs
Ireland	University College Dublin
Netherlands	Erasmus University Rotterdam, Leiden University, University of Amsterdam, VU University Amsterdam
Norway	University of Bergen, University of Oslo
Poland	University of Warsaw
Russia	Lomonosov Moscow State University, Saint Petersburg State University
Sweden	KTH, Lund University, University of Gothenburg, Uppsala University
Turkey	Boğaziçi University
United Kingdom	Cardiff University, King's College London, Royal Holloway, University of London, SOAS, University of London, The University of Edinburgh, The University of Manchester, The University of Sheffield, The University of Warwick, University of Birmingham, University of Glasgow, University of Southampton, University of St Andrews, University of York (UK)

<Round 2 Application>**Application Deadline: December 18, 2019 (Wednesday)**

Country/Region	Partner University
Korea	Ewha Womans University, Korea University, Seoul National University, Yonsei University
China	Beijing Foreign Studies University, Beijing Normal University, Fudan University, Jilin University, Nanjing University, Nankai University, Peking University, Renmin University of China, Shanghai Jiao Tong University, Tsinghua University, Xi'an Jiaotong University, Zhejiang University
Taiwan	National Chengchi University, National Cheng Kung University, National Taiwan University
Canada	Université de Montréal
Mexico	Tecnológico de Monterrey
Austria	WU (Vienna University of Economics and Business)
France	École normale supérieure (ENS), EDHEC Business School, ESSEC Business School, HEC Paris, INALCO, Jean Moulin - Lyon 3 University, Sciences Po, Toulouse 1 Capitole University, Université de Strasbourg, Université Nice Sophia Antipolis, Université Paris 1 Panthéon-Sorbonne, Université Paris Diderot, Université Sorbonne Nouvelle - Paris 3
Germany	Freie Universität Berlin, Heinrich Heine University Düsseldorf, Martin Luther University Halle-Wittenberg, RWTH Aachen University, Saarland University, Technische Universität Darmstadt (TU Darmstadt), Technische Universität München (TUM), TU Dresden, University of Bonn, University of Cologne, University of Siegen, WHU - Otto Beisheim School of Management
Greece	National and Kapodistrian University of Athens
Italy	Ca' Foscari University of Venice, "L'Orientale" University of Naples, Sapienza Università di Roma, Università Bocconi
Spain	ESADE Business School, Pompeu Fabra University (UPF), Universidad de Salamanca (USAL), Universitat Autònoma de Barcelona (UAB), University of Navarra
Switzerland	University of Bern, University of Geneva (UNIGE), University of St.Gallen, University of Zurich

<Round 3 Application>

Application Deadline: June 4, 2020 (Thursday)

Country/Region	Partner University
Australia	The Australian National University, The University of Melbourne, The University of New South Wales, The University of Queensland, The University of Sydney
New Zealand	The University of Auckland, University of Otago
Argentina	Universidad Torcuato Di Tella

* In the event that a partnership agreement is concluded after May 2019 and a new host university becomes available for the 2020 academic year, it will be posted on the website below:

http://www.ic.keio.ac.jp/keio_student/exchange/

6. Inquiries

International Exchange Services Group, Office of Student Services, Keio University, (Mita)

Tel: 03-5427-1613

E-mail: ic-student@adst.keio.ac.jp

URL: http://www.ic.keio.ac.jp/keio_student/exchange/

Office hours: 8:45 a.m. to 16:45 p.m., Monday-Friday (Closed on Saturdays, Sundays, and public holidays)

* Between 11:30-12:30 staff are away for lunch, so please refrain from calling or visiting during this time.

IV. Qualifications, etc.

Eligibility (Undergraduate Students)

- 1) Applicants must be a first-, second-, or third-year student at Keio University at the time of application. However, first-year students must be in their second semester at the time of the application and must be expected to advance to the second year. Fourth-year students may apply only if they meet one of the following criteria:
 - The student applies in the third round of applications (Round 3 Application) for the exchange program starting in February of the fourth year grade.
 - The student's affiliated faculty has approved an extension of enrollment for the student to study abroad. However, this does not include students who have extended their enrollment and are currently enrolled in the fourth year grade.

*The student plans to enroll in a graduate school at Keio University in the following academic year, refer to "Eligibility (Graduate Students and The student plans to enroll in a graduate school at Keio University in the following academic year)".

- 2) Exchange students must remain enrolled at Keio University until the end of their exchange program.
- 3) Applicants must have an excellent academic record. Students must have a cumulative grade point average—Cumulative GPA for Student Exchange—of 3.30 or more calculated from their Academic Transcript ("Gakugyou Seisekihyou") since their first year of the undergraduate program. *This calculation method is different to that for your GPA stated on your Academic Transcript (for those who enrolled during or after the 2017 academic year).

The Cumulative GPA for Student Exchange is calculated as below:

Courses taken up until AY 2016: $X=5A+4B+3C+0D$

Courses taken in AY 2017 and onward: $Y=5S+4.5A+4B+3C+0D$

Cumulative GPA= $X+Y/S+A+B+C+D$

(Note that grades such as P, F, ?, and G are not included in the calculation)

- 4) For each application round, applicants must submit a proof of language proficiency for the language spoken in the host university within the designated application period. Refer to VIII. Language used at University of Choice for the documents for each language that applicants need to prepare for their application.
- 5) If students are applying for universities that require proof of English language proficiency, they must meet the TOEFL iBT overall score of 70 or the IELTS overall score of 5.5. If the grades, at the time of making an internal application, are below the minimum requirement of their universities of choice by an overall score of 10 or more for the TOEFL iBT or 1.0 or more for the IELTS, the student will not be able to include those partner universities in their applications.
 - * The English language proficiency requirements given above is the minimum qualification that Keio sets for applicants for the internal application. It is highly recommended that by the time applicants make their internal application they have already met the language proficiency requirement set by the partner university. This does not only apply to English but also to the languages of instruction in classes you intend to take at your host university. In principle, if a student has not met the language proficiency requirement of the partner university, the student will not be accepted into that university.
 - * The TOEFL iBT score does not count as proof of English language proficiency required in obtaining a UK visa, so it is recommended that students submit their IELTS score for their internal application if applying for a university in the UK. Although students can make their internal application with their TOEFL scores, they must take the IELTS test before applying to the host university and acquire a score that meets their entry requirements.
- 6) Applicants must read and understand the content of the Written Oath and obtain the approval of their guarantor.

Written Oath: Download from http://www.ic.keio.ac.jp/keio_student/exchange/en.html

Conditions and Important Reminders for Each Undergraduate Faculty

- 1) Each undergraduate faculty at Keio University has its own conditions and important reminders for studying abroad. Transfer of credits from the host university is subject to different regulations (regarding year-long courses, accreditation and transfer credit, advancement to the next year, graduation, etc.) in each faculty. Applicants must make sure to carefully read the course registration guide before applying, and consult their academic advisor or an academic affairs staff member in charge of their faculty. Cases where students are able to complete an undergraduate degree in four years are limited. If students wish to advance to the next year after returning to Japan, they must check with their faculty about conditions and criteria regarding advancement to the next grade.
- 2) For students enrolled in the School of Medicine, being selected as an exchange student may prove difficult due to the nature of medical education systems overseas.

Notes for Applying(Undergraduate Students)

- 1) The number of placements may differ depending on the academic year in which the application is made.
- 2) Number of placements at each partner university, applicant criteria, scholarship, etc., are those of the time of publication of these application guidelines and are subject to change. The International Center will keep students posted with the latest information on the website.
- 3) If you have studied abroad as an outbound exchange student of a university-wide student exchange program in the past and wish to apply again to a student exchange program, please be sure to consult the International Exchange Services Group at the Office of Student Services before you apply.
- 4) On the day of the second screening (interview), those who have contracted and not yet recovered from an infectious disease for which the School Health and Safety Act requires attendance at university to be suspended must refrain from taking the interview as there is a risk of infecting other students, examiners, etc. In principle, even if you could not take the interview for the above reason, measures such as the provision of makeup examinations (interviews) will not be taken.
- 5) Applicants who have successfully passed the internal application and screening process are still “student exchange program candidates” and must receive the approval from the partner university to be officially accepted for the program.
- 6) Candidates may not be accepted by the partner university if they do not meet the entry requirements or if the partner university makes sudden changes to their terms and conditions, etc.
- 7) Students may not be able to take the desired courses at the desired faculties/departments of the host university due to enrollment limits or if the student does not meet the course entry requirements. Note that Keio University exchange students are not able to acquire a degree from the host university.
- 8) Once selected internally as a candidate, in principle, the student cannot withdraw his/her candidacy. Students must carefully consider and prepare their study abroad plans before applying.
- 9) Students must discuss with their guarantors about the necessary expenses for studying abroad and make their applications with the understanding and consent of their financial supporters and/or guarantors. For the host university application procedures or for a visa application, applicants may be required to submit documents such as bank statements to prove that they will have sufficient funding during the study abroad period. The cost of the study abroad varies according to the country and university, but in general, please allow for an amount in the range of 1,500,000 and 2,500,000 yen excluding tuition fee and other academic fees. For more information regarding expenses for study abroad, please check for information on the host university website, or read about the experiences of previous exchange students.
 - Keio University Overseas Travel Insurance plan and the Crisis Management Support Service
Exchange students are required to join the Keio University Overseas Travel Insurance plan and the Crisis Management Support Service (students must allow for about 150,000~200,000 yen for 12 months). However, even though students will be signed up to the Keio University Overseas Travel Insurance, if required by the host university or if it is necessary for

the visa application, students must join a separate insurance policy in the host country. The premium of the insurance policy designated by the host university varies depending on the country or region or the length of the study abroad period, but in general it can be anywhere between 100,000 to 400,000 yen. Especially at some universities in North America the price tends to be very high, and including Keio's mandatory insurance plan, students may have to pay as much as a total of 600,000 yen. The insurance plan specified by the host university can change from year to year, so students must confirm these details themselves when preparing for their study abroad. Some universities may have a waiver policy that exempts students from joining their preferred insurance plan if the student is able to submit by the designated date a document proving that the Keio Overseas Travel Insurance satisfies their requirements. Please note that joining travel insurances and making visa applications are the responsibility of the students who have been accepted for the exchange program.

- 10) Students may not apply concurrently for another exchange program independently organized by their affiliated faculty/graduate school. However, this rule does not apply if the results of one program are announced before the start of the application period of the other program.
- 11) For any questions regarding applications, please contact the International Exchange Services Group in the Office of Student Services before submitting your application.

International Exchange Services Group, Office of Student Services, Keio University (Mita)

E-mail: ic-student@adst.keio.ac.jp

Eligibility (Graduate Students and the students plan to enroll in a graduate school at Keio University in the following academic year)

- 1) Applicants must be enrolled as a graduate or doctoral student at one of Keio University's graduate schools, and the students plan to enroll in a graduate school at Keio University in the following academic year. However, if for any reason, the student is no longer enrolling in the following year, he/she is not eligible to become a candidate for the Keio University Student Exchange Program. In principle, students in their final year of their degree cannot apply. If you have any questions, please contact the International Exchange Services Group (ic-student@adst.keio.ac.jp) before the start of the application period.

- 2) Exchange students must remain enrolled at Keio University until the end of their exchange program.

Applicants must have an excellent academic record. Grade reports from all institutions where undergraduate and postgraduate studies were undertaken must be submitted. If the Academic Transcript ("Gakugyou Seisekihyou") at the undergraduate level is not available, applicants must submit the Transcript of Academic Records ("Seiseki Shoumeishou"). If the applicant graduated from a university other than Keio, an academic transcript from that university must be obtained. As a guideline, the student's undergraduate grades must have a cumulative grade point average—Cumulative GPA for Student Exchange —of 3.30 or more, and for graduate studies, if applicable, have a Cumulative GPA for Student Exchange of 4.30 or more for each post graduate degree (e.g. graduate degree). *This calculation method is different to that for your GPA stated on your Academic Transcript (for those who enrolled during or after the 2017 academic year).

The Cumulative GPA for Student Exchange is calculated as below:

Courses taken up until AY 2016: $X=5A+4B+3C+0D$

Courses taken in AY 2017 and onward: $Y=5S+4.5A+4B+3C+0D$

Cumulative GPA= $X+Y/S+A+B+C+D$

(Note that grades such as P, F, ?, and G are not included in the calculation)

- 3) Applicants must apply with the approval of their academic advisors to study abroad and submit a document that indicates this (in any format including letters and e-mail printouts).
- 4) At the time of application, applicants must have obtained an informal acceptance by an academic advisor at the university of their choice, and submit a document that indicates this (in any format including letters and e-mail printouts). If an informal acceptance cannot be obtained, due to the reason of the partner university, the applicant must submit a Statement of Reason.
- 5) The applicant must write a specific research plan for the study abroad period, including courses they will take, thesis advising, and fieldwork.
- 6) For each application round, applicants must submit a proof of language proficiency for the language spoken in the host university within the designated application period. Refer to VIII. Language used at University of Choice onwards for necessary documents for each language that applicants need to prepare for their application.
- 7) If students are applying for universities that require proof of English language proficiency, they must meet the TOEFL iBT overall score of 70 or the IELTS overall score of 5.5. If the grades, at the time of making an internal application, are below the minimum requirement of their universities of choice by an overall score of 10 or more for the TOEFL iBT or 1.0 or more for the IELTS, the student will not be able to include that partner university in their applications.
 - * The English language proficiency requirements given above is the minimum qualification that Keio sets for applicants for the internal application. It is highly recommended that by the time applicants make their internal application they have already met the language proficiency requirement set by the partner university. This does not only apply to English but also to other languages spoken in the country of the partner university. In principle, if a student has not met the language proficiency requirement of the partner university, the student will not be accepted into that university.
 - * The TOEFL iBT score does not count as proof of English language proficiency required in obtaining a UK visa, so it is recommended that students submit their IELTS score for their internal application if applying for a university in the UK. Although students can make their internal application with their TOEFL scores, they must take the IELTS test before applying to the host university and acquire a score that meets their entry requirements.
- 8) Applicants must read and understand the content of the Written Oath and obtain the approval of their guarantor.
Written Oath: Download from http://www.ic.keio.ac.jp/keio_student/exchange/en.html

Conditions and Important Reminders for Each Graduate School

Each graduate school at Keio University has their own conditions and important reminders for studying abroad. Transfer of credits from the host university is subject to different regulations (regarding year-long courses, accreditation and transfer credit, advancement to the next year, graduation, etc.) in each graduate school. Applicants must make sure to carefully read the course registration guide before applying, and consult their academic advisor or an academic affairs staff member in charge of their graduate school. If students wish to include the study abroad period into the enrollment period at Keio University, they must check with the staff in charge of academic affairs regarding formalities.

Notes for Applying(Graduate Students)

- 1) In terms of study abroad for graduate students, depending on the field of study or the partner university, prior approval from Keio University may be necessary. Students who are thinking about participating in an exchange program at a graduate school must contact the International Exchange Services Group, Office of Student Services (ic-student@adst.keio.ac.jp) four weeks prior to the end of the application period.
- 2) In principle, graduate students are required to study abroad at a graduate school or equivalent.
- 3) The number of student exchange placements may differ depending on the academic year.
- 4) Number of placements at each partner university, applicant criteria, scholarship, etc., are those of the time of publication of these application guidelines and are subject to change. The International Center will keep students posted with the latest

information on the website.

- 5) If you have studied abroad as an outbound exchange student of a university-wide student exchange program in the past and wish to apply again to a student exchange program, please be sure to consult the International Exchange Services Group at the Office of Student Services before you apply.
- 6) On the day of the second screening (interview), those who have contracted and not yet recovered from an infectious disease for which the School Health and Safety Act requires attendance at university to be suspended must refrain from taking the interview as there is a risk of infecting other students, examiners, etc. In principle, even if you could not take the interview for the above reason, measures such as the provision of makeup examinations (interviews) will not be taken.
- 7) Applicants who have successfully passed the internal application and screening process are still “student exchange program candidates” and must receive the approval from the partner university to be officially accepted for the program.
- 8) Candidates may not be accepted by the partner university if they do not meet the entry requirements or if the partner university makes sudden changes to their terms and conditions, etc.
- 9) Students may not be able to take the desired courses at the desired faculties/departments of the host university due to enrollment limits or if the student does not meet the course entry requirements. Note that Keio University exchange students are not able to acquire a degree from the host university.
- 10) Once selected internally as a candidate, in principle, the student cannot withdraw his/her candidacy. Students must carefully consider and prepare their study abroad plans before applying.
- 11) Students must discuss with their guarantors about the necessary expenses for studying abroad and make their applications with the understanding and consent of their financial supporters and/or guarantors. For the host university application procedures or for a visa application, applicants may be required to submit documents such as bank statements to prove that they will have sufficient funding during the study abroad period. The cost of the study abroad varies according to the country and university, but in general, please allow for an amount in the range of 1,500,000 and 2,500,000 yen excluding tuition fee and other academic fees. For more information regarding expenses for study abroad, please check for information on the host university website, or read about the experiences of previous exchange students.
 - Keio University Overseas Travel Insurance plan and the Crisis Management Support ServiceExchange students are required to join the Keio University Overseas Travel Insurance plan and the Crisis Management Support Service (students must allow for about 150,000~200,000 yen for 12 months). However, even though students will be signed up to the Keio University Overseas Travel Insurance, if required by the host university or if it is necessary for the visa application, students must join a separate insurance policy in the host country. The premium of the insurance policy designated by the host university varies depending on the country or region or the length of the study abroad period, but in general it can be anywhere between 100,000 to 400,000 yen. Especially at some universities in North America the price tends to be very high, and including Keio’s mandatory insurance plan, students may have to pay as much as a total of 600,000 yen. The insurance plan specified by the host university can change from year to year, so students must check these details themselves when preparing for their study abroad. Some universities may have a waiver policy that exempts students from joining their preferred insurance plan if the student is able to submit by the designated date a document proving that the Keio Overseas Travel Insurance satisfies their requirements. Please note that joining travel insurances and making visa applications are the responsibility of the students who have been accepted for the exchange program.
- 12) Students may not apply concurrently for another exchange program independently organized by their affiliated faculty/graduate school. However, this rule does not apply if the results of one program are announced before the start of the application period of the other program.

13) For any questions regarding applications, please contact the International Exchange Services Group in the Office of Student Services before submitting your application.

International Exchange Services Group, Office of Student Services, Keio University (Mita)

E-mail: ic-student@adst.keio.ac.jp

*** Handling of Personal Information**

- Personal information provided for application processes and online registration shall be strictly managed and protected based on Keio University's "Basic Policy Concerning Protection of Personal Information" and "Rules for Protection of Personal Information" so that there will be no leakage or outflow of information.
- Personal information shall be used only for duties related to the Keio University Student Exchange Program—application screening and selection of candidates, administrative purposes, contacting applicants and exchange students, preparing students for study abroad—during the relevant academic year. Personal information will not be used for any other purposes.
- The names of applicants who pass the internal screening and become a student exchange program candidate, as well as their e-mail addresses and names of host universities, will be shared with incoming exchange students from partner universities who will arrive in Japan anytime during the academic year in which the Keio exchange student departs for their study abroad to the academic year in which that student returns to Japan. This is done with the objective to vitalize student exchange at Keio University as well as to aide exchange students in their preparation for and smooth transition into life abroad.
- Personal information shall not be disclosed, provided, or entrusted to third parties for any other reasons than those mentioned above.

V. Application

1. How to Apply

Students must apply online for student exchange programs

Online application website (KEIO IC-NET): <https://studyabroad.gakuji.keio.ac.jp>

Application Guidelines: http://www.ic.keio.ac.jp/keio_student/exchange/en.html

Procedures for applying are as follows:

1. In a word file, write a statement of purpose, your study/research plan while abroad, and a statement of purpose for each university of choice once you check the necessary procedures and documents at the online application website (KEIO IC-NET)

2. Prepare to upload your ID photo. Photograph image should:

- be saved in JPEG (JPG) or PNG format only;
- be less than 5MB;
- have a dimension of 340 pixels by 453 pixels (aspect ratio 0.75)

Please read the “Instructions on the Photograph for Online Submission” on the website below.

http://www.ic.keio.ac.jp/doc/guide_picture_en_website1112.pdf

3. Scan the necessary documents indicated below and save them as PDF files (each file must be 5MB or less; black and white is recommended). If you do not have a scanner at home, use the scanners in the on-campus computer rooms.

Undergraduate students

- (1) Academic transcript
- (2) Certificate(s) of language proficiency
- (3) Written oath (Download from the International Center website and place you and your guarantor’s signature or seal.)

Graduate students and fourth-year undergraduate students planning to continue on to a graduate school

- (1) Academic transcript
- (2) Certificate(s) of language proficiency
- (3) Approval to study abroad
- (4) Letter of acceptance
- (5) GRE test score (if applicable)
- (6) Certificate of admission from the graduate school (if applicable)
- (7) Written oath (Download from the International Center website and place you and your guarantor’s signature or seal.)

* To scan and convert application documents into PDF files, students can use the on-campus facilities below:

Mita Campus: B1 Graduate School Building PC Room

Hiyoshi Campus: Seventh Building lobby, 1F Hiyoshi Media Center

Yagami Campus: B1 14th Building Open Space

Shonan Fujisawa Campus: Media Center Open Area

(For other campuses, contact the ITC office on your campus.)

4. Apply online within the application period.

When proceeding with your application, read the user guide manual and important notes available on the online application website.

Online application website: <https://studyabroad.gakuji.keio.ac.jp>

5. Keep all the application documents. After submitting your application, copy of your application form will be automatically accumulated in PDF format to the “portfolio” page of KEIO IC-NET.

2. Notes for Applying

- The applicant him/herself must enter and submit the online application.
- Make sure to follow all the instructions (e.g., full-width/half-width characters).
- The applicant him/herself must scan his/her academic transcript, certificate(s) of language proficiency, and other necessary documents and upload the PDF files onto the website. If you do not have a scanner at home, use the computer facilities on campus. Photographed documents are not accepted.
- Make sure to keep a printout of your online application for your own records.
- Applications or documents found to be incomplete or to contain errors may not be considered for selection. The university does not contact applicants even if any errors or omissions are discovered in the applications, so make sure you carefully check your application.
- Applications made outside the application period are invalid. Late submissions, regardless of the reason (e.g., data was submitted late or was not sent because of issues with your computer or there was too much web traffic), will not be accepted. Try to apply as early as possible as the website may be busy on the last day of the application period.

3. Students who wish to apply in English

Students who are expecting to earn their degrees in English (e.g. PEARL and GIGA program) are allowed to complete the application in English. For students that English is your first language (mother tongue), the submission of one of the following documents will be accepted instead of a TOEFL iBT or IELTS scores. However, keep in mind that you are required to submit all necessary documents by the internal application deadline even if you submit one of the following documents. In addition, if you are required to submit either TOEFL iBT or IELTS scores when submitting your application to the overseas university you plan to study at upon passing the internal screening, you must submit this document as requested.

► For students who studied in countries where English is the first language (including Ireland, the United Kingdom, Australia, Canada (excluding Quebec), New Zealand, and the United States of America, but not including countries where English is one of multiple official languages or where classes are given in English in a country where English is not the official language), documents that prove they were enrolled from junior high to high school for a total of five years or more in one or more of these countries (e.g., official English academic transcripts from the educational institutions that shows grades over the five or more years you were enrolled).

► International Baccalaureate final examination academic transcripts of Group 1 (Studies in language and literature) Courses in English (Language A: literature; Language A: language and literature; and Literature and performance).

► SAT (Scholastic Assessment Test) score report for the Critical Reading section (former Verbal section).

4. Application Documents

For Undergraduate Students

Fill in each field.	
(1) Student Profile	Fill in each field.
(2) History	Include education and work experience, overseas experience, research, and extra-curricular activities.
(3) Statement of Purpose (in English and in language used at university of choice*)	Write, in English, your reasons for applying for study abroad (about 500 words). If the language used at university of choice is not English, write your statement of purpose in that language in addition to English. Keep within the word limits indicated for English.
(4) Study/Research Plan While Abroad (in English and in language used at university of choice*)	Write, in English, your study/research plans while studying abroad at the partner university based on what you have studied/researched at Keio University (about 500 words). Write a detailed plan about courses you intend to take, fieldwork, etc., while studying abroad. There is no set way to write it. You could center it around your first choice of host institution, or writing it to be applicable to all your desired host institutions. Please use your own discretion. If the language used at university of choice is not English, write your study/research plan in that language in addition to English. Keep within the word limits indicated for English.
(5) Statement of Purpose According for Each University of Choice (in English and in language used at university of choice*)	<p>Select your universities of choice in order of preference, and for each one state the reason you chose them in English (between 60 and 120 words). If the language used at university of choice is not English, write the reason you chose the university in that language in addition to English. Keep within the word limits indicated for English.</p> <ul style="list-style-type: none"> – After the internal selection process, in principle, withdrawing your candidacy is not permitted, so before applying, please carefully research all universities of choice and list only the ones that you truly wish to do your study abroad at. It is not necessary to list up to your 6th choice. However, if the number of applications for one university exceeds the quota, they will be evaluated against each other, meaning that the fewer universities of choice listed, the higher the likelihood of not being selected for the exchange program. – Those who fill up the list to their 6th choice, please select whether you would also wish to study abroad at institutions besides these. By checking the “Yes” box, applicants who were not placed in any of the universities of their choice (for which re-applying in the next application round is not possible) will be considered for other universities, if they are deemed to fulfill the selection requirements (at which time, you can consider whether you will study abroad at the university that was introduced to you). – Applicants applying for McGill University, Queen's University, The University of British Columbia, Université de Montréal, University of Toronto, York University, Erasmus University Rotterdam: Indicate in which department or faculty you would like to enroll. In order to decide on the department/faculty, please refer to the "Undergraduate programs open to exchange students" and “Graduate programs open to exchange students” sections in Application Guidelines for Each Partner Institution. – If you select the University of California EAP (Education Abroad Program) for one of your six choices, list three UC campuses in order of preference.

*Language used at university of choice

Language used at university of choice is the language of instruction in classes you intend to take at the host university. If it is not English, write your statement of purpose, study/research plan while abroad and statement of purpose according for each university of choice in that language in addition to English. **If you intend to take classes in multiple languages, write in each language.** For more information on the languages used at the partner institutions, see Chapter VIII. Language used at university of choice as well as Application Guidelines for Each Partner Institution on the website.

Upload the documents indicated below (less than 5MB in size per file, black & white copy is recommended).

<p>(1) ID photograph</p>	<p>Your photograph image should:</p> <ul style="list-style-type: none"> - be saved in JPEG (JPG) or PNG format only; - be less than 5MB; - have a dimension of 340 pixels by 453 pixels (aspect ratio 0.75) <p>Please read the “Instructions on the Photograph for Online Submission” on the website below. http://www.ic.keio.ac.jp/doc/guide_picture_en_website1112.pdf</p>
<p>(2) Academic Transcript</p>	<p>The most recent Academic Transcript (“Gakugyou Seisekihyou”) sent to your guarantor at the end of the semester. <u>Be aware that this differs to the Transcript of Academic Record (“Seiseki Shoumeishou”).</u></p> <ul style="list-style-type: none"> – If you are a student who has transferred from another faculty, in addition to your current Academic Transcript, please upload all academic transcripts from the faculty you were previously enrolled in. – If you are applying during Round 1 Application or Round 2 Application, upload your Academic Transcript sent out by Keio at the end of the Spring Semester. For Round 3 Applications, please upload the Academic Transcript sent out at the end of the previous year’s Fall Semester. <p>If you have lost your Academic Transcript ("Gakugyou Seisekihyou"), you can print it out from keio.jp and use it for submission.</p>
<p>(3) Certificate(s) of Language Proficiency</p>	<p>Certificates of language proficiency tests issued by official organizations for the language(s) of instruction in the classes you intend to take during your study abroad. For more on which certifications are needed for the application, check below for the designated documents for each language, Chapter VIII. Language used at university of choice, as well as Application Guidelines for Each Partner Institution on the website for the language ability required at each institution. Certificates of language proficiency must be uploaded by the deadline. Late uploads, regardless of the reason will not be accepted.</p> <p>Taking classes in <u>English</u>: A certificate of language proficiency issued by an official English language testing body.</p> <ul style="list-style-type: none"> – For TOEFL iBT or IELTS, submit a score attained within the last two years. – Upload the TOEFL iBT Examinee Score Report, or the IELTS Test Report Form. – In the case that the TOEFL iBT or IELTS score reports have not been sent out yet, a printout of an online score report may be permitted. – You may upload only one test report per IELTS or TOEFL iBT. – Refer to “Students who Wish to Apply in English” section on page <p>Taking classes in <u>French</u>: Upload a certificate of language proficiency issued by an official French language testing body. However, if you have taken a French language proficiency test but the results have not arrived within the application period, you may provide 1) the test slip <u>and</u> 2) a Language Proficiency Testimonial written by a faculty member attesting to your language ability (prescribed form available). In this case, if the results are out by the second screening</p>

	<p>(interview), submit a copy of the certificate at the second screening.</p> <p>Taking classes in languages <u>other than those listed above:</u> Upload either a certificate from a language proficiency test or a Language Proficiency Testimonial from a faculty member attesting to your language ability.</p> <p>Language Proficiency Testimonial by the faculty member</p> <ul style="list-style-type: none"> - Ensure that the Language Proficiency Testimonial by the faculty member includes detailed notes on listening, reading and comprehension, writing, and conversation skills, and his/her judgment that your level is sufficient for study/research at university. The faculty member attesting to your language ability must be affiliated to Keio University, and the testimonial must be written in Japanese. In unavoidable circumstances the form can be written by a faculty not affiliated to Keio University or written in English. For the French, German, Greek, Italian, Russian, and Spanish languages, please use the prescribed form. Other languages are free-format.
(4) Written Oath	<p>After carefully consulting your guarantor, have both you and your guarantor sign or place a seal on it. Keep the signed written oath until the completion of the student exchange program for your record.</p> <p>Written Oath: Download from http://www.ic.keio.ac.jp/keio_student/exchange/en.htm</p>

Application for Graduate Students and Fourth-Year Undergraduate Students Planning to Continue on to Graduate School

Fill in each field.	
(1) Student Profile	Fill in each field.
(2) History	Include education and work experience, overseas experience, research history, and a summary of your major research paper.
(3) Statement of Purpose (in English and in language used at university of choice*)	Write, in English, your reasons for applying for study abroad (about 800 words). If the language used at university of choice is not English, write your statement of purpose in that language in addition to English. Keep within the word limits indicated for English.
(4) Study/Research Plan While Abroad (in English and in language used at university of choice*)	Write, in English, your study/research plans while studying abroad at the partner university based on what you have studied/researched at Keio University (about 800 words). Write a detailed plan about courses you intend to take, thesis guidance, fieldwork, etc., while studying abroad. There is no set way to write it. You could center it around your first choice of host institution, or writing it to be applicable to all your desired host institutions. Please use your own discretion. If the language used at university of choice is not English, write your study/research plan in that language in addition to English. Keep within the word limits indicated for English.
(5) Statement of Purpose for Each University of Choice (in English and in language used at university of choice*)	<p>Select your universities of choice in order of preference, and for each one state the reason you chose them in English (between 60 and 120 words). If the language used at university of choice is not English, write the reason you chose the university in that language in addition to English. Keep within the word limits indicated for English.</p> <ul style="list-style-type: none"> – After the internal selection process, in principle, withdrawing your candidacy is not permitted, so before applying, please carefully research all universities of choice and list only the ones that you truly wish to do your study abroad at. It is not necessary to list up to your 6th choice. However, if the number of applications for one university exceeds the quota, they will be evaluated against each other, meaning that the fewer universities of choice listed, the higher the likelihood of not being selected for the exchange program. – Those who fill up the list to their 6th choice, please select whether you would also wish to study abroad at institutions besides these. By checking the “Yes” box, applicants who were not placed in any of the universities of their choice (for which re-applying in the next application round is not possible) will be considered for other universities, if they are deemed to fulfill the selection requirements (at which time, you can consider whether you will study abroad at the university that was introduced to you). – Applicants applying for McGill University, Queen's University, The University of British Columbia, Université de Montréal, University of Toronto, York University(Canada), Erasmus University Rotterdam: Indicate in which department or faculty you would like to enroll. In order to decide on the department/faculty, please refer to the “Graduate programs open to exchange students” sections in Application Guidelines for Each Partner Institution. <p>If you select the University of California EAP (Education Abroad Program) for one of your six choices, list three UC campuses in order of preference.</p>

*Language used at university of choice

Language used at university of choice is the language of instruction in classes you intend to take at the host university. If it is not English, write your statement of purpose, study/research plan while abroad and statement of purpose according for each university of choice in that language in addition to English. **If you intend to take classes in multiple languages, write in each language.** For more information on the languages used at the partner institutions, see Chapter VIII. Language used at university of choice as well as Application Guidelines for Each Partner Institution on the website.

Please upload the documents indicated below (less than 5MB in size per file, black & white copy is recommended).

<p>(1) ID photograph</p>	<p>Your photograph image should:</p> <ul style="list-style-type: none"> - be saved in JPEG (JPG) or PNG format only; - be less than 5MB; - have a dimension of 340 pixels by 453 pixels (aspect ratio 0.75) <p>Please read the “Instructions on the Photograph for Online Submission” on the website below.</p> <p>– http://www.ic.keio.ac.jp/doc/guide_picture_en_website1112.pdf</p>
<p>(2) Academic Transcript</p>	<p>The most recent Academic Transcript (“Gakugyou Seisekihyou”) sent to your guarantor at the end of the semester. <u>Be aware that this differs to the Transcript of Academic Record (“Seiseki Shoumeisho”).</u></p> <ul style="list-style-type: none"> – Upload the academic transcripts for all undergraduate faculties and graduate schools you have been affiliated to. If you no longer have an academic transcript from your undergraduate degree, upload your Transcript of Academic Record. Those who have graduated from other universities please obtain and upload an academic transcript from that university. – If you are a student who has transferred from another university, in addition to your current Academic Transcript, please upload all undergraduate academic transcripts from the university you were previously enrolled in. – If you are applying during Round 1 Application or Round 2 Application, submit your Academic Transcript sent out by Keio at the end of the Spring Semester. For Round 3 Applications, please upload the Academic Transcript sent out at the end of the previous year’s Fall Semester. <p>If you have lost your Academic Transcript ("Gakugyou Seisekihyou"), you can print it out from keio.jp and use it for submission.</p>
<p>(3) Certificate(s) of Language Proficiency</p>	<p>Certificates of language proficiency tests issued by official organizations for the language(s) of instruction in the classes you intend to take during your study abroad. For more on which certifications are needed for the application, check below for the designated documents for each language, Chapter VIII. Language used at university of choice, as well as Application Guidelines for Each Partner Institution on the website for the language ability required at each institution. Certificates of language proficiency must be submitted by the deadline. Late uploads, regardless of the reason will not be accepted.</p> <p><u>Taking classes in English:</u></p> <p>A certificate of language proficiency issued by an official English language testing body.</p> <ul style="list-style-type: none"> – For TOEFL iBT or IELTS, submit a score attained within the last two years. – Upload the TOEFL iBT Examinee Score Report, or the IELTS Test Report Form. – In the case that the TOEFL iBT or IELTS score reports have not been sent out yet, a printout of an online score report may be permitted. – You may upload only one test report per IELTS or TOEFL iBT. – Refer to “Students who Wish to Apply in English” section on page <p><u>Taking classes in French:</u></p> <p>Upload a certificate of language proficiency issued by an official French language testing body. However, if you have taken a French language proficiency test but the results have not arrived within the application period, you may provide 1) the test slip <u>and</u> 2) a Language Proficiency Testimonial written by a faculty member attesting to your language ability (prescribed form available). In this case, if the results are out by the second screening (interview), submit a copy of the certificate at the second screening.</p>

	<p>Taking classes in languages <u>other than those listed above</u>: Upload either a certificate from a language proficiency test or a Language Proficiency Testimonial from a faculty member attesting to your language ability.</p> <p>Language Proficiency Testimonial by the faculty member – Ensure that the Language Proficiency Testimonial by the faculty member includes detailed notes on listening, reading and comprehension, writing, and conversation skills, and his/her judgment that your level is sufficient for study/research at university. The faculty member attesting to your language ability must be affiliated to Keio University, and the testimonial must be written in Japanese. In unavoidable circumstances the form can be written by a faculty not affiliated to Keio University or written in English. For the French, German, Greek, Italian, Russian, and Spanish languages, please use the prescribed form. Other languages are free-format.</p>
(4) Approval to Study Abroad	A written document from your Keio University Academic Advisor that gives approval for you to study abroad. Any format is acceptable, including letters or e-mail.
(5) Letter of Acceptance	A written document from a faculty member at your university of choice that indicates his/her informal consent to become your academic advisor during the study abroad period. As this is not a formal application, an official Letter of Acceptance is usually not issued. However, when you officially apply to the partner university as a Keio University Exchange Student, please confirm with the faculty member whether he/she will be your academic advisor. It can be in any format, including e-mail. If, depending on the university's situation, you are unable to submit a Letter of Acceptance, please upload a statement of reason instead.
(6) GRE Test Score (if applicable)	The results of your GRE General Test and/or Subject Tests. To study abroad at an American graduate school, scores from the GRE (Graduate Record Examinations) may be necessary depending on the program. Please ensure that you confirm which GRE tests are necessary at your universities of choice, take the tests, and upload the grades within the application period.
(7) Certificate of Admission from the Graduate School	If you are currently a fourth-year undergraduate student and wish to study abroad in the next school year as a graduate student, you must upload a certificate of admission from your intended Keio University graduate school. If you are going to take the entrance examination for the graduate program after the application period for the exchange program, submit the notification of admission after passing the examination. However, in the event that you do not pass the examination for the graduate program, you will forfeit your right as a Keio University student exchange candidate.
(8) Written Oath	After carefully consulting your guarantor, have both you and your guarantor sign or place a seal on it. Keep the signed written oath until the completion of the student exchange program for your record. Written Oath: Download from http://www.ic.keio.ac.jp/keio_student/exchange/en.htm

VI. Selection

1. Screening

- First Screening: Application documents
- Second Screening: Interview

2. Things valued highly in the selection process

In the selection, based on the submitted documents and the interview, all the points below are taken into consideration comprehensively to determine your suitability for the study abroad. The selection does not merely prioritize grades and language ability.

For undergraduate students

- Study plan (content of the plan and objectives, knowledge of the universities of choice, etc.)
- Knowledge on the specialized field of study (expertise, academic achievement, etc.)
- Ability to express oneself clearly
- Sense of independence, maturity, social skills, motivation, and cooperativeness
- Listening, speaking, reading, and writing skills in the language used at the partner university
- Flexibility and ability to adapt to other cultures

For graduate students

In addition to the above, the content of the research plan at the partner university

VII. Selecting Your University of Choice

1. Selecting Your University of Choice

Here are some key factors to consider to help you determine which partner universities are best suited to you.

Objective	<ul style="list-style-type: none">- What do you want to gain from your study abroad?- How do you want to make use of your study abroad experience in the future?- What kind of fields/research themes do you wish to deepen your knowledge in?
Environment	<ul style="list-style-type: none">- Courses you can take and class content- Class style (e.g. small class size, discussion-based classes)- Size of university (e.g. total student population, student-faculty ratio)- Type of university (e.g. liberal arts, comprehensive/research university)- University facilities (e.g. services for exchange students, dormitories)- The education system in the country of the university- Primary language spoken at the university and in the country- Location, living environment (e.g. city vs. town, climate, language)
Application criteria	<ul style="list-style-type: none">- Language proficiency test scores- GPA- Qualifications (e.g. year grade at the start of the study abroad period)

When selecting your universities of choice, research and compare many different universities before making your selections.

There are many attractive universities in non-English-speaking countries as well. Universities that are well known in Japan may not necessarily be the most suitable one for your study abroad. It is important to select a university that will best fulfill your goals for studying abroad, so consider your own motives and objectives and research the subjects available to exchange students, the

class style, etc. Even if it does not have high name recognition in Japan, a university may carry out cutting-edge research or education in certain fields, or have an excellent learning and living environment for exchange students. Please thoroughly gather information on your universities of choice on the internet, etc., before making your selections.

2. Information on Partner Universities

For more detailed information on partner universities besides that given in these application guidelines and on the International Center website, please ensure that you check the websites of the partner schools. Also, at the International Exchange Corner in the Global Lounge on the first floor of the South School Building on Mita Campus, you are able to browse materials related to studying abroad as well as pamphlets from Keio's partner universities.

3. Study Abroad Report

Study abroad reports are published on the International Center website (keio.jp authorization required). However, they are based on the individual experiences of students who participated in the exchange program. Please check the websites of our partner universities for the latest information.

< http://www.ic.keio.ac.jp/keio_student/report/report_f.html >

VIII. Language used at university of choice

Below is the list of the language(s) of instruction in the classes you intend to take during your study abroad. . For more on which certifications are needed for the application, check below for the designated documents for each language, as well as Application Guidelines for Each Partner Institution on the website for the language ability required at each institution. If classes are offered in multiple languages, you can either plan to take courses in only one language or in multiple languages (unless there is a language requirement).

Area	University	Application Period	English	Korean	Chinese	French	German	Italian	Russian	Spanish	Other	Note
China	Beijing Foreign Studies University	Round2	○		○							Courses conducted in English are only Business and English Literature
	Beijing Normal University	Round2	○		○							
	City University of Hong Kong	Round1	○									
	Fudan University	Round2	○		○							
	Jilin University	Round2	○		○							Courses conducted in English are only Political science and Public policy
	Nanjing University	Round2	○		○							
	Nankai University	Round2			○							Courses conducted in English are only Business and Economics
	Peking University	Round2	○		○							
	Renmin University of China	Round2			○							
	Shanghai Jiao Tong University	Round2	○		○							
	The Chinese University of Hong Kong	Round1	○									
	The University of Hong Kong	Round1	○									
	Tsinghua University	Round2	○		○							
	University of Macau	Round1	○		○							
	Xi'an Jiaotong University	Round2			○							
Zhejiang University	Round2	○		○								
East Asia	3 Campus East Asia	Round1	○									
Indonesia	Universitas Indonesia	Round1	○								Indonesian	
Korea	Ewha Womans University	Round2	○	○								
	Korea University	Round2	○	○								
	Seoul National University	Round2	○	○								
	Yonsei University	Round2	○	○								
Taiwan	National Chengchi University	Round2	○		○							
	National Cheng Kung University	Round2	○		○							
	National Taiwan University	Round2	○		○							The Department of Anthropology requires exchange students have Chinese language proficiency as there is no course taught in English in the department.
Philippines	University of the Philippines	Round1	○									
Singapore	National University of Singapore	Round1	○									
	Singapore Management University	Round1	○									
Thailand	Chulalongkorn University	Round1	○								Thai	
Viet Nam	Foreign Trade University	Round1	○									
Australia	The Australian National University	Round3	○									
	The University of Melbourne	Round3	○									
	The University of New South Wales	Round3	○									
	The University of Queensland	Round3	○									
	The University of Sydney	Round3	○									
New Zealand	The University of Auckland	Round3	○									
	University of Otago	Round3	○									

Area	University	Application Period	English	Korean	Chinese	French	German	Spanish	Other	Note
Canada	Concordia University	Round1	○							
	McGill University	Round1	○							
	Queen's University	Round1	○							
	The University of British Columbia	Round1	○							
	Université de Montréal	Round2				○				
	University of Calgary	Round1	○							
	University of Toronto	Round1	○							
	York University(Canada)	Round1	○							
United States of America	Allegheny College	Round1	○							
	American University	Round1	○							
	Boston University	Round1	○							
	Brown University	Round1	○							
	Bryn Mawr College	Round1	○							
	Carnegie Mellon University	Round1	○							
	Dartmouth College	Round1	○							
	Georgetown University	Round1	○							
	Illinois Wesleyan University	Round1	○							
	Manhattanville College	Round1	○							
	Rice University	Round1	○							
	The College of William & Mary	Round1	○							
	The University of North Carolina at Chapel Hill	Round1	○							
	University of California Education Abroad Program	Round1	○							
	University of Hawai'i at Mānoa	Round1	○							
	University of Illinois at Urbana-Champaign	Round1	○							
	University of Maryland, College Park	Round1	○							
	University of Notre Dame	Round1	○							
	University of Pennsylvania	Round1	○							
	University of Washington	Round1	○							
University of Wisconsin-Madison	Round1	○								
Western Michigan University	Round1	○								
Argentina	Universidad Torcuato Di Tella	Round3						○		
Mexico	Tecnológico de Monterrey	Round2	○					○		
Austria	WU (Vienna University of Economics and Business)	Round2	○				○			
Denmark	Aarhus University	Round 1	○							
France	École normale supérieure (ENS)	Round2				○				
	EDHEC Business School	Round2	○			○				
	ESSEC Business School	Round2	○			○				English proficiency is mandatory.
	HEC Paris	Round2	○			○				
	INALCO	Round2				○				
	Jean Moulin - Lyon 3 University	Round2	○			○				
	Sciences Po	Round2	○			○				
	Toulouse 1 Capitole University	Round2				○				
	Université de Strasbourg	Round2	○			○				
	Université Nice Sophia Antipolis	Round2				○				France proficiency is mandatory.
	Université Paris 1 Panthéon-Sorbonne	Round2				○				
	Université Paris Diderot	Round2				○				
Université Sorbonne Nouvelle - Paris 3	Round2				○					

Area	University	Application Period	English	Korean	Chinese	French	German	Italian	Russian	Spanish	Other	Note
Germany	Freie Universität Berlin	Round2					o					
	Heinrich Heine University Düsseldorf	Round2					o					
	Martin Luther University Halle-Wittenberg	Round2					o					
	RWTH Aachen University	Round2	o				o					There are few classes conducted in English.
	Saarland University	Round2					o					
	Technische Universität Darmstadt (TU Darmstadt)	Round2	o				o					There are few classes conducted in English.
	Technische Universität München (TUM)	Round2	o				o					There are few classes conducted in English.
	TU Dresden	Round2					o					
	University of Bonn	Round2	o				o					Beginner level of German is mandatory. There are few classes conducted in English.
	University of Cologne	Round2	o				o					
	University of Siegen	Round2	o				o					There are few classes conducted in English.
WHU - Otto Beisheim School of Management	Round2	o				o						
Greece	National and Kapodistrian University of Athens	Round2	o								Greek	There are few classes conducted in English.
Hungary	University of Pécs	Round1	o									
Ireland	University College Dublin	Round1	o									
Italy	Ca' Foscari University of Venice	Round2	o					o			Italian	
	"L'Orientale" University of Naples	Round2						o			Italian	
	Sapienza Università di Roma	Round2	o								Italian	There are few classes conducted in English.
	Università Bocconi	Round2	o					o			Italian	
Netherlands	Erasmus University Rotterdam	Round1	o									
	Leiden University	Round1	o									
	University of Amsterdam	Round1	o									
	VU University Amsterdam	Round1	o									
Norway	University of Bergen	Round1	o									
	University of Oslo	Round1	o									
Poland	University of Warsaw	Round1	o								Polish	
Russia	Lomonosov Moscow State University	Round1							o		Russian	
	Saint Petersburg State University	Round1	o						o		Russian	Depending on the faculty, classes are conducted in Russian only.
Spain	ESADE Business School	Round2	o							o		
	Pompeu Fabra University (UPF)	Round2	o							o		
	Universidad de Salamanca(USAL)	Round2								o		
	Universitat Autònoma de Barcelona (UAB)	Round2	o							o		Spanish is mandatory
	University of Navarra	Round2								o		Courses conducted in English are mainly offered at the School of Economics and Business.
Sweden	KTH	Round1	o									
	Lund University	Round1	o									
	University of Gothenburg	Round1	o									
	Uppsala University	Round1	o									
Switzerland	University of Bern	Round2	o				o					There are few classes conducted in English.
	University of Geneva (UNIGE)	Round2	o			o						There are few classes conducted in English.
	University of St.Gallen	Round2	o				o					
	University of Zurich	Round2					o					

Area	University	Application Period	English	Korean	Chinese	French	German	Italian	Russian	Spanish	Other	Note
Turkey	Boğaziçi University	Round1	○									
United Kingdom	Cardiff University	Round1	○									
	King's College London	Round1	○									
	Royal Holloway, University of London	Round1	○									
	SOAS, University of London	Round1	○									
	The University of Edinburgh	Round1	○									
	The University of Manchester	Round1	○									
	The University of Sheffield	Round1	○									
	The University of Warwick	Round1	○									
	University of Birmingham	Round1	○									
	University of Glasgow	Round1	○									
	University of Southampton	Round1	○									
	University of St Andrews	Round1	○									
	University of York (UK)	Round1	○									

You need certificates of language proficiency tests issued by official organizations for the language(s) of instruction in the classes you intend to take during your study abroad. For more on which certifications are needed for the application, check below for the designated documents for each language, as well as Application Guidelines for Each Partner Institution on the website for the language ability required at each institution. Certificates of language proficiency must be submitted by the deadline. Late uploads, regardless of the reason will not be accepted.

English	TOEFL iBT, IELTS (It is recommended that students submit their IELTS score for their internal application if applying for a university in the UK)	Korean	Test of Proficiency in Korean(TOPIK), Hanguru Nōryokukentei Shiken, Korean Language Ability Test (KLAT)
Chinese	HSK, <i>Chūgokugo Kentei Shiken</i> , SC-TOP(*Only for applying a university in Taiwan)	French	DELFDALF, Jitsuyō Furansugo Ginōkentei Shiken, TCF
German	Goethe-Institut exam certificate, Goethe-Institut course participation certificate, Test Daf, <i>Doitsugō Ginōkentei Shiken</i> , The state-approved Österreichisches Sprachdiplom Deutsch (ÖSD) certificate		
Italian	CILS, <i>Jitsuyō Itariago Kentei Shiken</i>	Russian	Test of Russian as a Foreign Language, Roshicago Nōryokuken
Spanish	DELE, <i>Supein-go Ginōkentei</i>	Greek	<i>Girishago Nōryokukentei Shiken</i>

*Taking classes in languages other than those listed above, please make an inquiry to the International Exchange Services Group (ic-student@adst.keio.ac.jp).

IX. Past Application Statistics

For the Past Application Statistics, please check the website below:

http://www.ic.keio.ac.jp/keio_student/exchange/ex_data.html

<Round 1 Application>

Country	University	2019			2018			2017		
		Placements Available	Selected as 1st Choice	Passed Internal Selection	Placements Available	Selected as 1st Choice	Passed Internal Selection	Placements Available	Selected as 1st Choice	Passed Internal Selection
East Asia	3 Campus East Asia	5	1	1	5	1	1	5	0	0
Indonesia	Universitas Indonesia	2	0	0	2	0	0	2	2	2
China	City University of Hong Kong	1	0	0	1	0	0	1	0	0
	The Chinese University of Hong Kong	4	1	1	4	1	4	4	2	3
	The University of Hong Kong	3	1	3	3	5	3	3	1	2
	University of Macau	1	0	0	1	0	0	2	0	0
Philippines	University of the Philippines	1	0	0	1	0	0	1	0	0
Singapore	National University of Singapore	2	8	2	2	9	2	2	12	2
	Singapore Management University	7	6	7	2	2	2	2	1	2
Thailand	Chulalongkorn University	1	0	0	1	1	1	1	0	0
Viet Nam	Foreign Trade University	4	0	0	4	0	0	1	0	0
Canada	Concordia University	2	0	0	4	1	3	3	0	0
	McGill University	3	4	3	3	2	3	3	3	3
	Queen's University	4	2	2	4	1	2	3	3	2
	The University of British Columbia	11	8	9	9	4	9	10	4	8
	University of Calgary ※	3	1	3	2	1	2	-	-	-
	University of Toronto	2	6	2	1	3	1	0	0	0
	York University (Canada)	2	2	2	2	4	2	1	0	1
United States of America	Allegheny College	1	0	1	1	1	1	1	2	1
	American University	4	2	4	2	7	2	1	7	1
	Boston University	4	9	4	4	11	4	2	7	2
	Brown University	2	12	2	2	9	2	1	13	1
	Bryn Mawr College	2	1	1	2	0	2	2	0	0
	Carnegie Mellon University	2	6	2	2	5	2	2	4	2
	Dartmouth College	1	5	1	1	5	1	1	0	1
	Georgetown University	N/A	-	-	N/A	-	-	N/A	-	-
	Illinois Wesleyan University	1	0	1	2	2	2	1	0	1
	Manhattanville College	3	1	3	2	6	2	2	4	2
	Rice University	1	1	1	1	3	1	1	0	1
	The College of William & Mary	1	3	1	2	1	2	5	3	5
	The University of North Carolina at Chapel Hill	2	2	2	2	1	2	2	0	1
	University of California Education Abroad Program	16	38	16	20	47	20	20	44	20
	University of Hawai'i at Mānoa	3	3	3	4	4	4	3	1	3
	University of Illinois at Urbana-Champaign	2	3	2	2	1	2	2	1	2
	University of Maryland, College Park	2	0	2	1	0	1	1	0	1
	University of Notre Dame	2	1	2	2	3	2	1	1	1
	University of Washington	5	5	5	5	10	5	4	6	4
	University of Wisconsin-Madison	2	5	2	3	0	3	4	4	4
Western Michigan University	4	5	4	4	7	4	4	8	4	
Denmark	Aarhus University ※	2	0	2	2	1	2	-	-	-
Ireland	University College Dublin	2	1	1	3	0	1	2	0	0
Netherlands	Erasmus University Rotterdam	6	5	4	7	3	3	7	4	2
	Leiden University	2	1	1	2	0	0	2	0	1
	University of Amsterdam	3	1	3	3	3	3	2	1	1
	VU University Amsterdam	3	0	2	1	2	1	1	0	0
Norway	University of Bergen	2	0	2	2	0	1	2	0	2
	University of Oslo	5	3	5	4	3	4	4	0	4
Poland	University of Warsaw	2	2	2	1	0	0	2	0	0
Russia	Lomonosov Moscow State University	1	1	1	1	2	1	-	-	-
	Saint Petersburg State University	1	0	0	2	2	2	-	-	-
Sweden	KTH	1	3	1	1	2	1	1	4	1
	Lund University	4	3	4	4	1	3	4	1	2
	University of Gothenburg	2	3	2	2	1	2	3	1	3
	Uppsala University	4	18	4	2	5	2	2	6	2

Country	University	2019			2018			2017		
		Placements Available	Selected as 1st Choice	Passed Internal Selection	Placements Available	Selected as 1st Choice	Passed Internal Selection	Placements Available	Selected as 1st Choice	Passed Internal Selection
United Kingdom	Cardiff University	1	2	1	2	1	2	2	0	0
	King's College London	3	3	3	3	7	3	3	2	2
	Royal Holloway, University of London	1	3	1	1	5	1	1	3	1
	SOAS, University of London	2	3	2	2	1	1	2	5	2
	The University of Edinburgh	4	6	4	4	4	4	3	4	3
	The University of Manchester	2	4	2	2	8	2	2	2	2
	The University of Sheffield	2	1	2	1	2	1	2	5	2
	University of Birmingham	5	2	5	5	5	5	2	5	2
	University of Glasgow	2	5	2	1	3	1	-	-	-
	University of Southampton	2	0	0	1	1	1	2	0	1
	The University of Warwick✘	3	4	3	3	6	3	-	-	-
University of York (UK)	1	0	1	1	1	1	-	-	-	
Turkey	Bogazici University	1	0	0	1	0	0	4	1	1
Total		187	216	154	179	227	150	159	177	116

<Round 2 Application>

Country	University	2019			2018			2017		
		Placements Available	Selected as 1st Choice	Passed Internal Selection	Placements Available	Selected as 1st Choice	Passed Internal Selection	Placements Available	Selected as 1st Choice	Passed Internal Selection
Korea	Ewha Womans University	1	0	0	1	1	1	1	0	0
	Korea University	3	1	1	3	0	0	1	0	0
	Seoul National University	3	3	3	3	2	2	2	1	1
	Yonsei University	4	3	3	3	3	2	1	0	0
China	Beijing Foreign Studies University	2	1	1	-	-	-	-	-	-
	Beijing Normal University	2	0	1	2	0	0	2	0	0
	Fudan University	1	5	1	1	1	1	2	2	2
	Jilin University	2	2	2	2	0	0	2	0	0
	Nanjing University	1	0	1	1	0	0	2	0	0
	Nankai University	1	0	0	1	1	0	1	0	0
	Peking University	2	5	2	2	3	2	2	2	2
	Renmin Univeristy of China	2	0	0	2	0	0	2	1	1
	Shanghai Jiao Tong University	2	0	1	2	0	0	1	1	1
	Tsinghua Univeristy	2	9	2	2	2	2	2	1	1
	Xi'an Jiaotong University	3	1	0	3	0	0	3	1	1
	Zhejiang University	3	2	3	3	1	1	3	1	1
	Taiwan	National Chengchi University	6	0	0	4	0	0	2	0
National Cheng Kung University		1	0	0	1	0	0	1	0	0
National Taiwan University		3	2	2	3	1	1	3	1	2
Canada	Université de Montréal	5	0	0	2	1	1	2	2	2
Mexico	Tecnológico de Monterrey	2	0	1	5	0	0	-	-	-
Austria	WU (Vienna University of Economics and Business)	2	7	2	2	6	2	2	1	1
France	École normale supérieure (ENS)	1	1	1	1	1	1	1	0	0
	EDHEC Business School	2	2	2	2	0	2	-	-	-
	ESSEC Business School	5	4	3	3	8	3	5	2	2
	HEC Paris	3	9	3	3	4	3	3	2	2
	INALCO	2	1	1	2	0	1	1~2	0	0
	Jean Moulin – Lyon 3 University	3	1	1	2	3	2	2	4	2
	Sciences Po	1	3	1	1	15	1	4	6	4
	Toulouse 1 Capitole University	3	0	0	3	0	2	2	0	1
	Université Nice Sophia Antipolis	5	0	0	1	0	1	1	0	0
	Université Paris 1 Panthéon-Sorbonne	2	3	2	2	3	2	2	2	1
	Université Paris Diderot	2	2	2	2	1	2	2	2	2
Université Sorbonne Nouvelle – Paris 3	5	4	4	2	3	2	2	0	0	
Université de Strasbourg	5	7	5	-	-	-	-	-	-	
Germany	Freie Universität Berlin	2	3	2	2	2	2	2	4	2
	Heinrich Heine University Düsseldorf	2	0	1	2	0	0	1	0	1
	Martin Luther University Halle-Wittenberg	3	2	2	3	2	2	3	2	1
	RWTH Aachen University	2	0	1	2	0	0	3	1	2
	Saarland University	3	0	0	3	0	0	5	0	0
	Technische Universität Darmstadt (TU Darmstadt)	3	0	0	3	1	1	5	0	0
	Technische Universität München (TUM)	5	5	5	4	4	4	1	3	2
	TU Dresden	4	2	2	5	0	0	2	0	0
	University of Bonn	2	5	2	3	2	2	2	1	1
	University of Cologne	2	6	2	2	5	2	3	2	1
	University of Siegen	4	0	1	4	0	0	5	0	0
WHU – Otto Beisheim School of Management	1	1	0	1	0	0	1	1	1	
Greece	National and Kapodistrian University of Athens	1	0	0	1	0	0	1	1	0
Italy	Ca' Foscari University of Venice	6	2	3	5	1	1	4	1	2
	"L'Orientale" University of Naples	1~2	1	1	2	0	0	1~2	2	2
	Università Bocconi	1	6	1	1	6	1	1	0	1
	Sapienza Università di Roma	2	0	2	-	-	-	-	-	-
Russia	Lomonosov Moscow State University	-	-	-	-	-	-	1	2	1
	Saint Petersburg State University	-	-	-	-	-	-	1	0	1
Spain	ESADE Business School	2	4	2	2	2	2	1	2	1
	Pompeu Fabra University (UPF)	1	2	1	1	3	1	1	0	0
	Universidad de Salamanca (USAL)	2	3	2	2	2	2	2	1	1
	Universitat Autònoma de Barcelona (UAB)	2	3	0	2	2	2	2	0	0
	University of Navarra	3	2	3	3	4	3	3	0	0
Switzerland	University of Bern	4	5	4	3	2	3	3	1	2
	University of Geneva (UNIGE)	5	9	5	3	1	3	3	1	1
	University of St.Gallen	2	2	2	2	6	2	2	1	0
	University of Zurich	2	0	0	1	0	0	1	0	0

<Round 2 Application>

Additional Application Round

Country	University	2019			2018			2017		
		Placements Available	Selected as 1st Choice	Passed Internal Selection	Placements Available	Selected as 1st Choice	Passed Internal Selection	Placements Available	Selected as 1st Choice	Passed Internal Selection
East Asia	3 Campus East Asia	4	0	0	4	2	2	5	1	1
Indonesia	University of Indonesia	N/A	-	-	2	1	1	N/A	-	-
China	City University of Hong Kong	1	0	0	1	0	0	N/A	-	-
	The Chinese University of Hong Kong	3	2	1	N/A	-	-	1	1	1
	The University of Hong Kong	N/A	-	-	N/A	-	-	1	3	1
	University of Macau	1	0	1	1	1	1	2	0	1
Viet Nam	Foreign Trade University	4	0	0	4	1	1	1	0	0
Canada	Concordia University	2	1	1	1	1	0	3	0	0
	Queen's University	2	2	2	2	2	2	1	0	1
	The University of British Columbia	2	0	1	2	4	1	1	0	0
USA	Bryn Mawr College	1	0	0	N/A	-	-	N/A	-	-
	The University of North Carolina at Chapel Hill	N/A	-	-	N/A	-	-	1	1	1
	University of Pennsylvania *	1	6	1	-	-	-	-	-	-
	University of Maryland, College Park	N/A	-	-	N/A	-	-	1	1	0
Hungary	University of Pécs	2	1	0	-	-	-	-	-	-
Ireland	University College Dublin	1	1	1	2	2	2	2	0	0
Netherlands	Erasmus University Rotterdam	2	1	1	4	0	1	5	1	2
	Leiden University	1	1	1	2	2	2	1	0	0
	University of Amsterdam	N/A	-	-	N/A	-	-	2	2	2
	VU University Amsterdam	1	1	0	N/A	-	-	1	1	1
Norway	University of Bergen	N/A	-	-	1	3	1	N/A	-	-
Poland	University of Warsaw	N/A	-	-	2	2	1	2	0	0
Sweden	Lund University	N/A	-	-	1	2	1	2	1	2
United Kingdom	Cardiff University	N/A	-	-	N/A	-	-	2	1	1
	King's College London	N/A	-	-	N/A	-	-	1	1	0
	SOAS, University of London	N/A	-	-	1	0	1	N/A	-	-
	The University of Warwick	N/A	-	-	3	6	3	N/A	-	-
	University of Glasgow	N/A	-	-	N/A	-	-	2	6	2
	University of Southampton	2	2	1	N/A	-	-	1	0	1
	University of St Andrews *	1	2	1	-	-	-	-	-	-
University of York	N/A	-	-	N/A	-	-	1	2	1	
Total		190~191	161	107	2187	135	91	161~163	80	70

*As the partnership agreement was concluded after October 2018, applicants are taken during Round 2 Application for the 2019 academic year.

<Round 3 Application>

Country	University	2018			2017			2016		
		Placements Available	Selected as 1st Choice	Passed Internal Selection	Placements Available	Selected as 1st Choice	Passed Internal Selection	Placements Available	Selected as 1st Choice	Passed Internal Selection
Australia	The Australian National University	2	3	2	1	4	1	1	5	1
	The University of Melbourne	2	6	2	2	8	2	1	9	1
	The University of New South Wales	5	0	5	6	2	2	7	2	3
	The University of Queensland	4	6	4	4	5	4	3	5	3
	The University of Sydney	5	7	5	6	1	4	4	7	4
New Zealand	The University of Auckland	1	6	1	1	1	1	3	9	3
	University of Otago	1	0	1	1	1	1	1	1	1
Argentina	Torcuato di Tella University	2	1	1	2	0	0	2	3	2
合計		22	29	21	23	22	15	22	41	18

X FAQs

Preparations for Applying

Q: How should I research partner universities?

A: We recommend referring to [Chapter VII. Selecting Your University of Choice](#) in this handbook and other sources as a reference to research and compare various universities from different perspectives. In Chapter X. Application Guidelines for Each Partner Institution in the Application Guidelines for Keio University Exchange Students (Outbound), the URL for each partner university is listed, so make sure to use these. Another good way to gather information is by going to study abroad fairs run by embassies and other organizations.

See also: “Information about Study Abroad”

Q: Can I talk to actual people who have done a study abroad?

A: If contact details such as e-mail addresses are included in the study abroad reports by the previous Keio exchange students you may contact them directly.

< http://www.ic.keio.ac.jp/keio_student/report/report_f.html >

Q: At the partner university, can I study something other than my specialist field?

A: It is possible for programs or courses that do not require you to have previously taken core courses etc., in that field. When making your application, it is important to clearly write in your Study Plan how your studies at Keio are relevant to what you want to study at the partner institution.

Q: What happens with tuition fees while studying abroad?

A: Exchange students are exempt from tuition fees at the partner university, but they must pay tuition fees to Keio University. For details, see Tuition Fees while Studying Abroad on Study abroad Handbook.

Q: About how much are the expenses for studying abroad?

A: It can vary greatly depending on the country and region you go to, as well as your lifestyle. More information can be found in the sections Costs for Studying Abroad and [Notes for Applying](#) , and also refer to resources like the websites for the relevant partner universities and the study abroad reports by past Keio exchange students.

Application Documents

Q: When first-year undergraduate students apply, are they at a disadvantage?

A: Sometimes there is not enough information to evaluate their academic ability, so in some cases when there are a lot of applicants, students who are in their second year or higher may be given priority. However, there have been many instances where students who applied in their first year were accepted.

Q: Who is at a bigger advantage: undergraduate students or graduate students?

A: For the selection, undergraduate students are evaluated on their merits as undergraduate students, as are graduate students, so neither can be said to be at an advantage.

Q: To what degree do grades and language ability affect selection?

A: Selection is based on an overall evaluation, so it is never decided solely on grades or language ability. For the first screening, keep in mind that all documents you submit will be taken into account.

Q: Do I have to fill in my universities of choice until the 6th choice?

A: The number of universities of choice you enter is up to you. For your universities of choice, carefully research and fill only the universities that you really wish to study at. After passing the internal screening, in principle, withdrawing from the program is not permitted. At the same time, if you list only a small number of universities and the number of students who want to study at the same universities exceeds their maximum number of students, applicants will be evaluated against each other and the probability of not being accepted will increase.

Q: Do I have to write a separate study plan for each university of choice I give?

A: You may write one for each university, or you may write one centered around your first choice. For example, you may use the structure of "I want to study A, which I can do at University B or University C." There is no set way to write the study plan, so research your preferred universities thoroughly and strongly convey what you want to study at which university.

Q: The evaluation system is different for courses taken up until the 2016 academic year and for courses taken in the 2017 academic year and onward. How do I make the calculation?

A: Refer to "[IV. Qualifications, etc.](#)" for the method that Keio University uses to calculate the Cumulative GPA. For the calculation, grades are converted to a five-point grade scale. However, the "Minimum GPA" mentioned in "[Application Guidelines for Each Partner Institution](#)" is calculated differently using, in principle, a four-point grade scale. Refer to the webpage below for the calculation method.

http://www.ic.keio.ac.jp/keio_student/exchange/partners_info.html

Q: My TOEFL/IELTS scores will not be on time for the application. Can I still apply?

A: Your score is needed for your application. If you do not have it by the application deadline, we cannot accept your application. However, we do accept printouts of scores that are available online.

Q: Am I unable to apply if my TOEFL/IELTS are low?

A: If you wish to study abroad at universities that require certification of English language proficiency, for the TOEFL iBT you must have an overall score of 70 or higher, or for the IELTS an overall score of 5.5 or more. If, at the time of the internal application you fall below the minimum language ability requirements set by the partner university by 10 points or more for the TOEFL iBT or 1.0 point or more for the IELTS, you cannot list that university as one of your choices. These standards for language ability are set forth as the minimum qualification requirements for the internal application. Not just for English but for all languages used at the study abroad destination, we strongly recommend that applicants meet the language ability requirements set by the partner universities by the time of the internal application. Students who do not meet these language ability requirements will in general not be accepted by the partner university. Please endeavor to keep improving your language ability so as to gain the most out of your study abroad experience.

Q: I wish to study abroad at a UK institution but I only have scores for the TOEFL iBT. Can I still apply?

A: You may make the internal application, however, the IELTS is necessary for acquiring a UK visa and for applying to the partner university, so take the IELTS and attain the required score as soon as possible before applying to the partner university.

Q: I got a score of 700 points for the TOEIC test. Can I convert it to a TOEFL score?

A: Points cannot be converted between TOEIC and TOEFL. Please ensure that you take the appropriate test(s) needed for your application.

Q: What is the difference between the TOEFL Examinee Score Record and the Official Score Report? Can I apply with the Examinee Score Record?

A: The Examinee Score Record is the examinee's copy of their score report, and it is sent to the examinees by the US Educational Testing Service (ETS). In principle the Examinee Score Record cannot be reissued. It is purely for the examinee to confirm the content, and in many cases it is not accepted as an official score report. The Official Score Report is the official record, and at the examinee's request it is sent by ETS directly to the desired institution and not to the examinees themselves. The purpose of this is to ensure that scores cannot be altered or falsified. <https://www.ets.org/jp/toefl/ibt/scores/get>

Q: My TOEFL score will expire soon after the application period. Is it still okay?

A: As long as the score is valid past the final day of the application period, it is fine for the internal selection. However, after passing the internal selection and before applying to the partner university, you will need to submit another score that meets the necessary score requirements.

Q: The results for my language proficiency test (not including English tests) will not be on time for the Round 2 Application deadline. Can I still apply?

A: For information on the certifications necessary for the application, see [the application documents charts](#) and Chapter [VIII. Language Proficiency Tests for Each Language](#). The documents required differ according to the language.

Q: What kind of things should I ask the faculty member write in the Language Proficiency Testimonial?

A: He or she should include detailed notes on listening, reading and comprehension, writing, and conversation skills, and his/her judgment that your level is sufficient for study/research at university. The faculty member attesting to your language ability must be affiliated to Keio University, and the testimonial must be written in Japanese. In unavoidable circumstances, the form can be written by a faculty not affiliated to Keio University or written in English. For the French, German, Greek, Italian, Russian, and Spanish languages, please use the prescribed form, and other languages are free-format.

Partner University

Q: Can I enroll in any class?

A: Undergraduate students should check the rows "Undergraduate programs open to exchange students" in [Application Guidelines for Each Partner Institution](#). Usually this will state which faculties, classes, etc., you can study in at the partner institutions. However, please be aware in advance that there may be prerequisites set for different courses or limits on the number of students, so you may not necessarily be able to enroll in the subjects you wish. For the most up-to-date information, please check the partner universities' websites.

Q: What kind of accommodation will I stay in?

A: It varies slightly depending on the university, but in general, you will stay in a university dormitory or an apartment or other accommodation that is mediated by the university. However, at some universities, students must find their own accommodation.

Q: For the classes, do I join ones that are especially for study abroad students?

A: In principle, Keio exchange students take the same classes as local students. At some of our partner universities, students are required to take courses designed for international students.

Q: Can I extend (or shorten) my study abroad period?

A: One year is standard for the Keio University Student Exchange Programs (Outbound), so extending (or shortening) it is not possible. Also, you are not able to earn a degree at the host institution.

Q: About how much are the expenses for studying abroad?

A: It can vary greatly depending on the country and region you go to, as well as your lifestyle. More information can be found in the sections [Costs for Studying Abroad](#) and [Notes for Applying](#), and also refer to resources like the websites for the relevant partner universities and the study abroad reports by past Keio exchange students.

Job Hunting

Q: Won't studying abroad put me at a disadvantage for job hunting?

A: If, when you are job hunting, you are able to show and say with confidence “I studied this” and “I had these experiences,” it may conversely be advantageous. However, some types of occupations have a limited period for job hunting, so you must confirm beforehand with placement offices, etc. During the study abroad at the partner university, it is not permitted under any circumstances to temporarily return to Japan for job hunting activities outside of holiday periods or to cut the study abroad short and return to Japan for personal reasons.

Q: Can I return to Japan earlier for job hunting?

A: If the final examinations at the partner university have finished and it is a holiday period, you may return to Japan even if the study abroad period that you originally applied for is not finished. However, cutting the study abroad short during term-time at your own accord is not allowed.

Transfer of Credits, Advancing to the Next Year, Graduation

Q: Will the credits I earn count towards the credits needed for graduation? After coming back to Japan can I advance to the next year?

A: To transfer credits, submit an Application for the Transfer of Credits to the Academic Affairs Office for your faculty or graduate school after returning to Japan. The final decision concerning transfer of credits will be made by the Faculty Board or Graduate School Committee, etc., upon deliberation. For more detail on the procedures, check with the Academic Affairs Office for your faculty/graduate school.

Q: Can I still graduate in four years?

A: The conditions for graduation or advancing to the next grade after returning to Japan vary according to the faculty or graduate school, so please check with the Academic Affairs Office for your faculty or graduate school.